

I want to limit the operation by the operators!

Safe and secure system is possible by the conditional visibility in accordance with the operator (user ID).

Application example

Before

All operators used the same screen to operate.

[Part-timer: Ms. A]
Ms. A is not familiar with the machine. I want her to only check the running status.

[Chief operator: Mr. B]
Mr. B took safety training program for this machine. I want him to operate the machine.

Administrator
We need to split work depending on their skills...

Use “security” function and “conditional visibility”!

After

By logging in each user ID, items to be displayed on the screen is changeable.

Login screen
Security
Security Level : 0
User Name
Password
Log In Log Out Cancel

Login as “A”

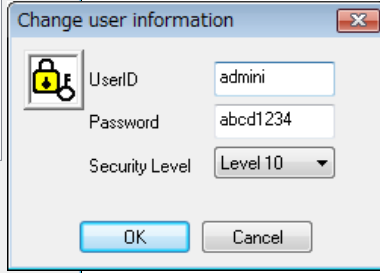
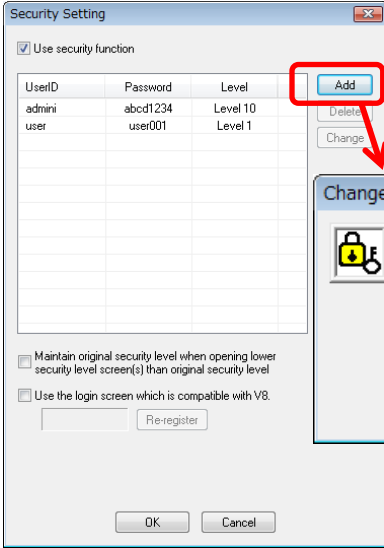
Ms. A

Mr. B

Administrator
Now we can show only the items each operator needs during the operation.

Settings

Security setting (System Setting > Other > Security Setting)

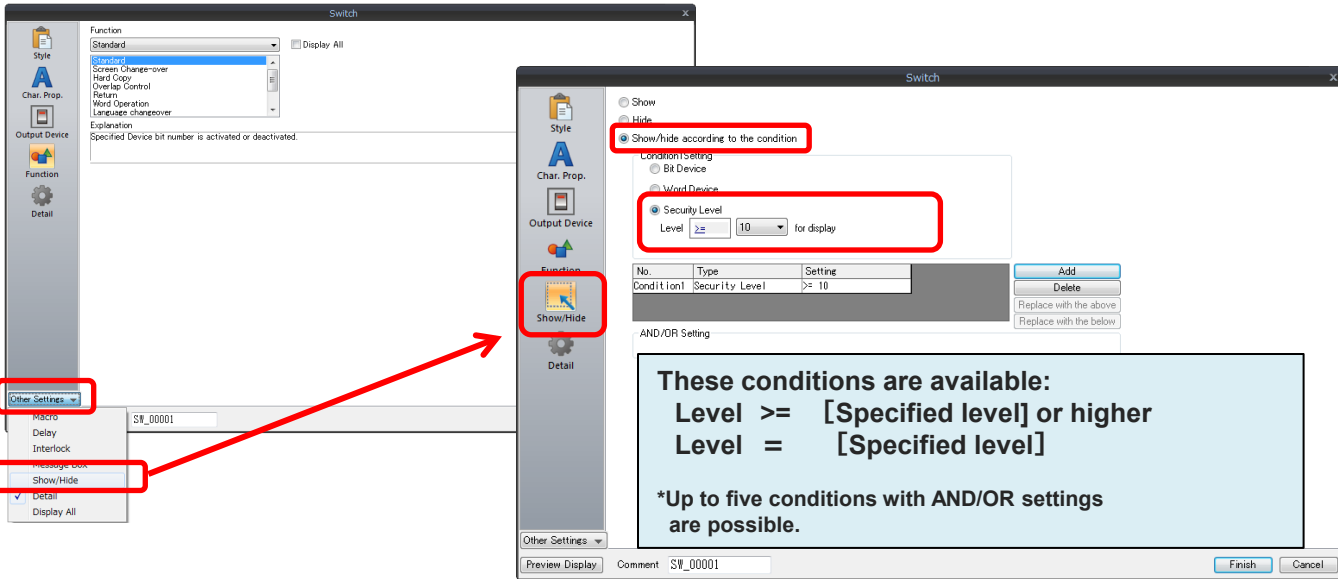


Register [User ID], [Password], [Level (1 – 15)].

Security level
 1 Low
 :
 15 High

Visibility setting

e.g.) Switch



You can achieve safe and secure system with simple settings.

