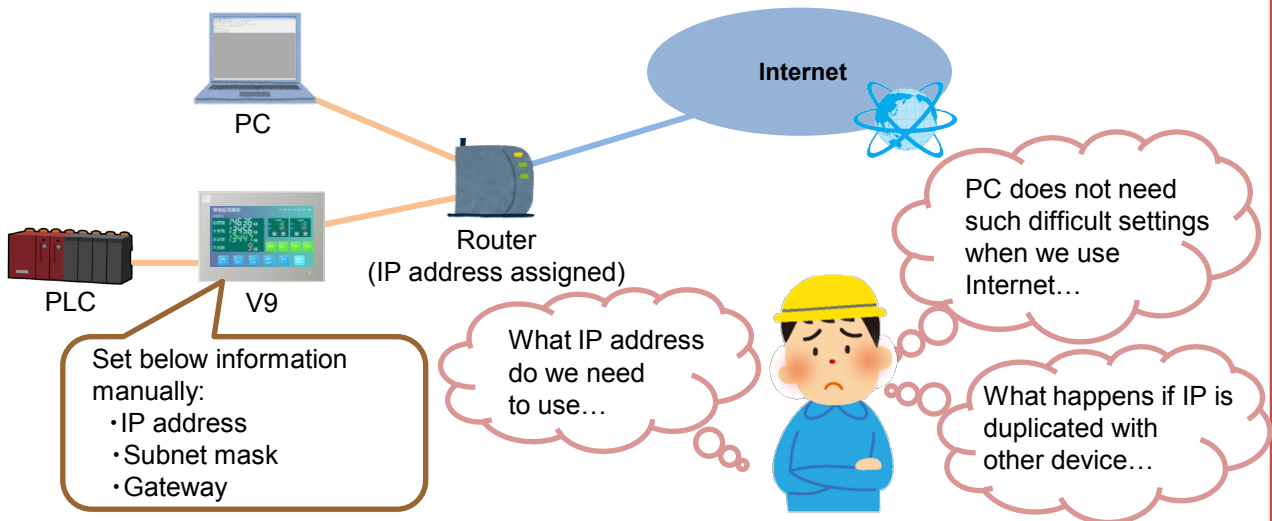


[Simple Internet Connection] DHCP client function supported!

Before

To connect MONITOUCH to Internet, you need to decide IP address for the MONITOUCH...

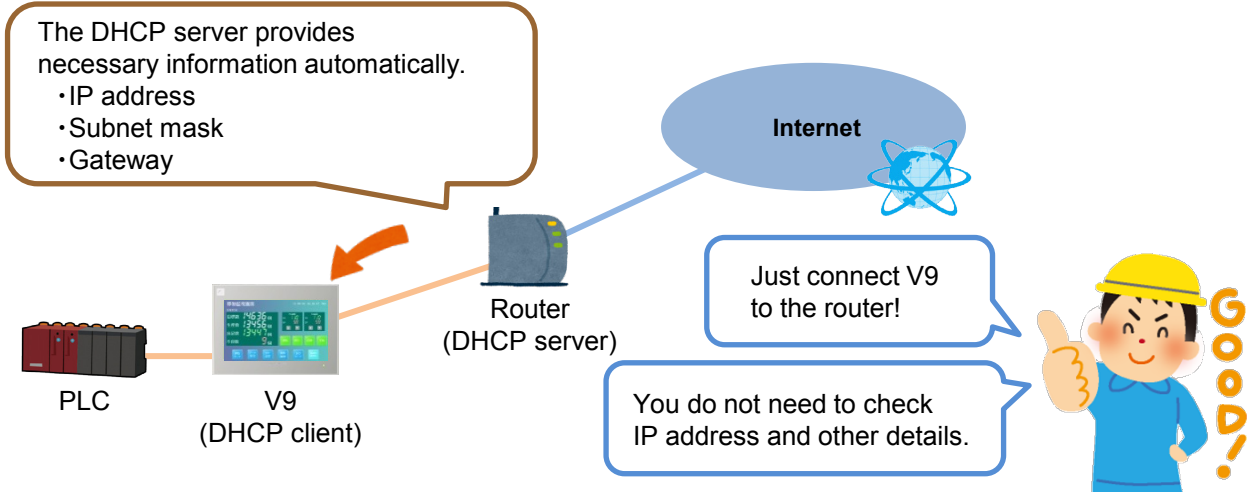


Try DHCP client feature!

*DHCP: Dynamic Host Configuration Protocol

After

Information which is necessary for connection such as IP address etc., is automatically obtained from the DHCP server.



Please turn over.



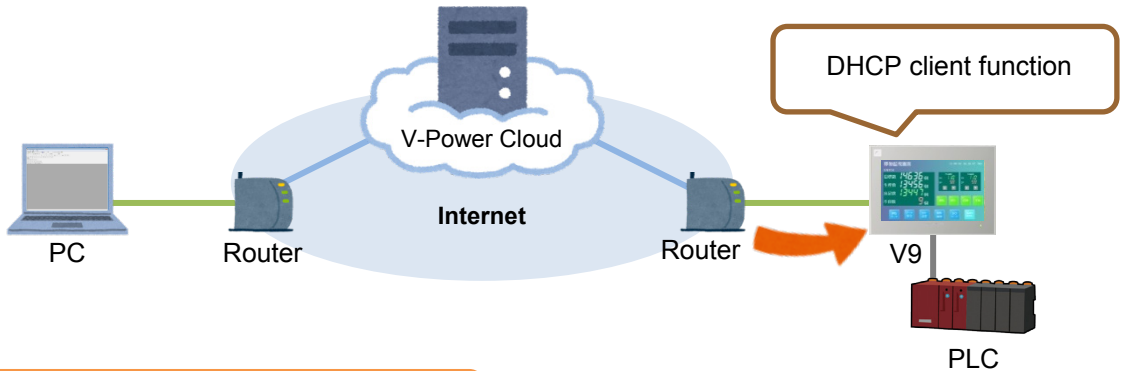
Which features is DHCP function useful for?

- VPN remote access service
- Cloud data service
- E-Mail function

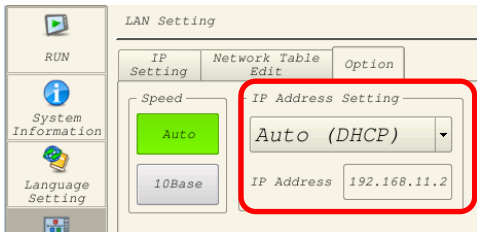


Internet access is needed for each function!

E.g.) VPN remote access service

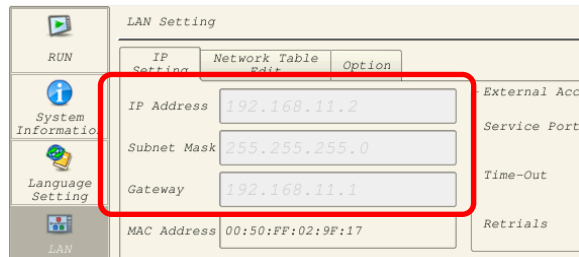


How do I setup the DHCP function?



On V9, go to [LAN Setting] > [Option] > [IP Address Setting] and select [**Auto (DHCP)**].

A router acts as a DHCP server to assign [IP address], [subnet mask], and [gateway] to V9 automatically.



* Information which have been automatically assigned is displayed in a gray out state.



Functions using Internet connection is now easy to setup with DHCP client function!