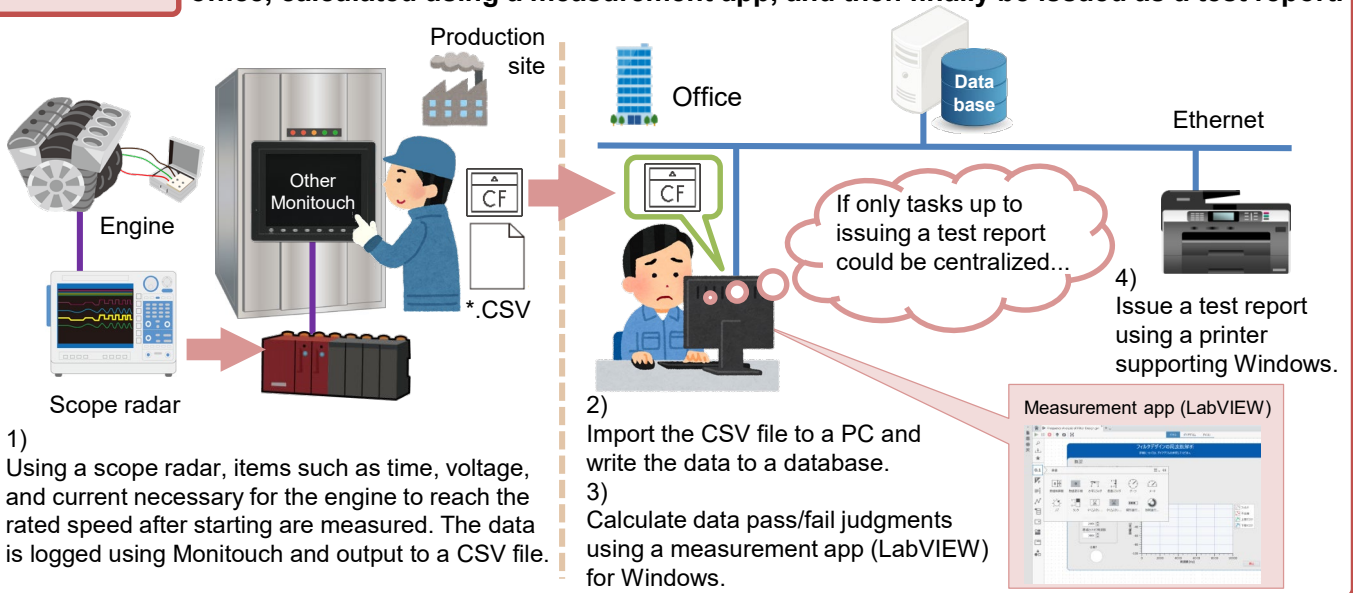


# <Proposal for Work Reduction> Automation of Data Input by Introducing the X1 Series

Before

Measurement data (on a CF card) needs to be taken from the production site to the office, calculated using a measurement app, and then finally be issued as a test report.



## Optimize by using the X1 series!

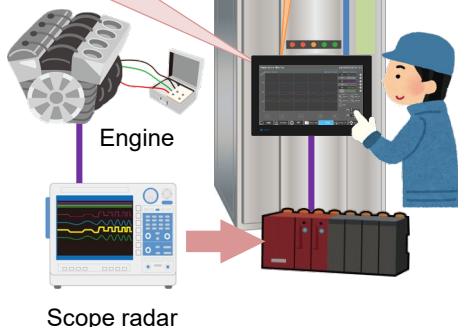
After

One X1 series unit can play three roles! Automate data input to drastically reduce work!



- Automatic writing of measurement data (using the MES interface function)
- Running the measurement app (starting a Windows app)
- Issuing a test report (connecting to a printer supporting Windows)

2) Start the measurement app.



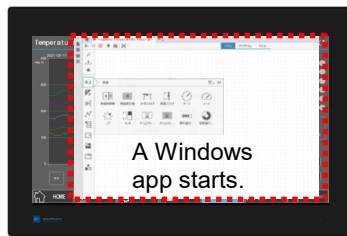
All processes can be done by just operating the X1 series unit!



**Convenient X1 series functions: Starting and tiling apps and switching between apps**

**Starting an app**

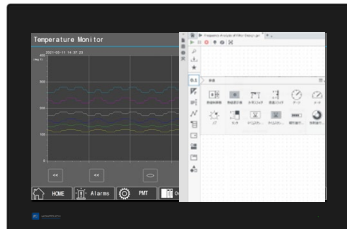
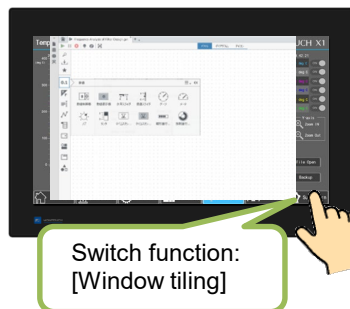
Use the "HMI-USEREXE" macro command.



\* For information on macro commands, refer to the X1 Series Reference Manual 2 or the V9 Series Macro Reference Manual.

**Tiling app windows**

App windows can be tiled by pressing a switch with the [Function] set to [Window tiling].

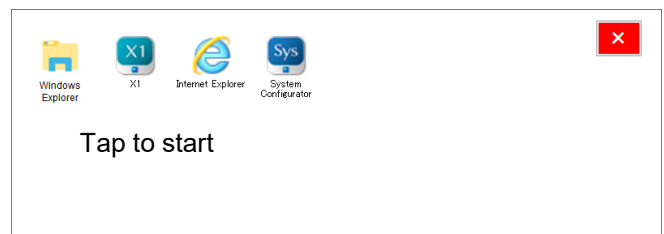
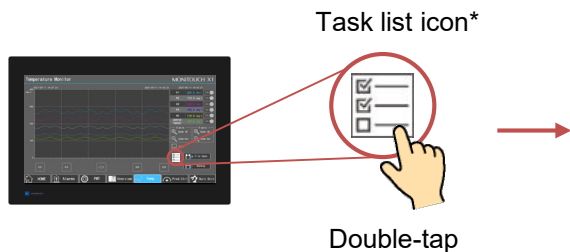


Being able to tile the HMI screen and a Windows app and also operate them is very convenient!



**Switching between apps**

Show a list of currently running apps by tapping the task list icon and select the app to switch to.



\* Specify whether to show or hide the task list icon using System Configurator. For details, refer to the X1 Series Hardware Specifications.



**Build a smart production site by introducing the X1 series!**

**Hakko Electronics Co., Ltd.**

Overseas Sales Section

TEL: +81-76-274-2144 FAX: +81-76-274-5136

<http://monitouch.fujielectric.com/>