

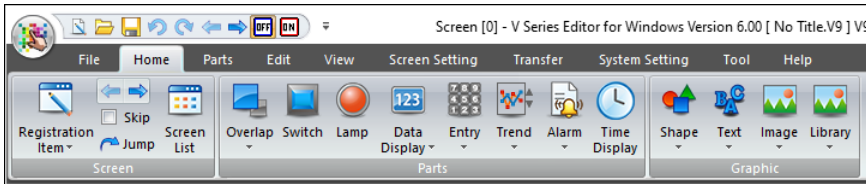
<Useful Information>

Change Your Work Environment by Preference Using the V-SFT-6 Display Change Function for Menu and Part Settings!

V-SFT version 6 can switch between the Ver. 6 style and Ver. 5 style for displaying menus and part settings.

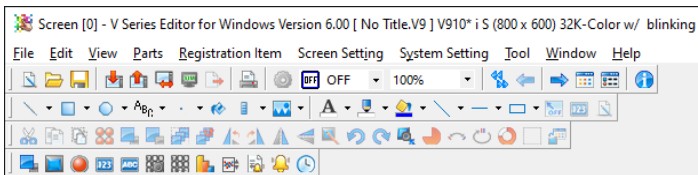
Menu display

Ver. 6 style



An intuitive **ribbon menu!**
Easy to understand even for those using V-SFT for the first time!

Ver. 5 style

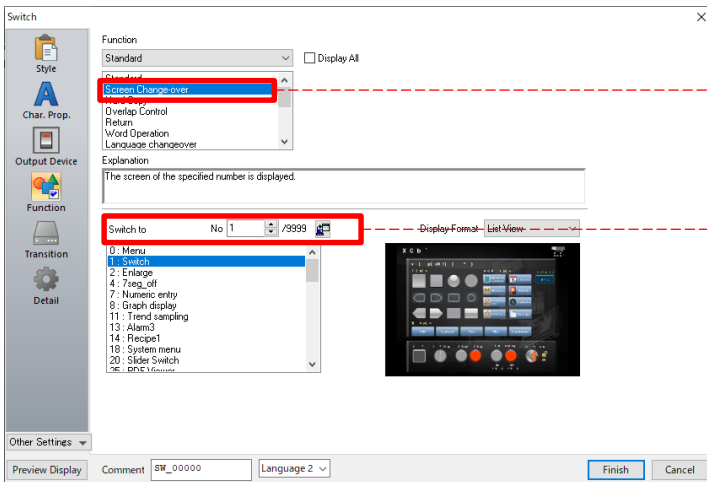


Traditional menu bar and tool bars for same interface as V-SFT version 5!

Part settings display

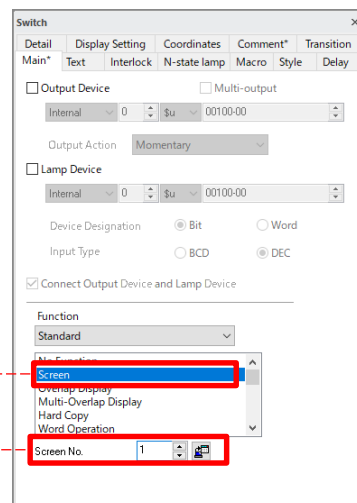


Ver. 6 style (window)



Clicking the [Finish] button confirms settings, helping to prevent setting errors caused by operation mistakes!
Setting contents are easy to understand, allowing for configuration **without reading a manual!**

Ver. 5 style (item view pane)



Confirm settings by clicking the [X] on the item view pane or by clicking anywhere other than the item view pane!
Settings can be configured with **fewer clicks!**

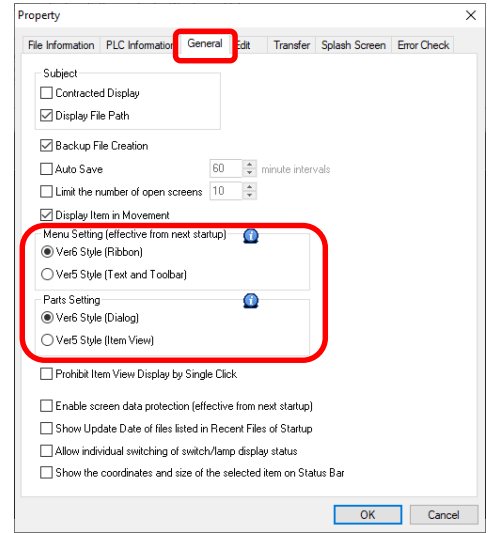
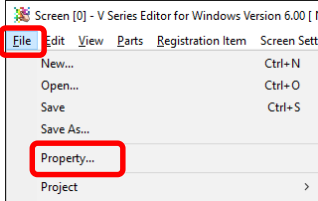
Changing the Display

1. Click [File] → [Property] on V-SFT-6.

Ver. 6 style



Ver. 5 style



2. On the [General] tab, select between [Ver6 Style] and [Ver5 Style] for [Menu Setting] and [Parts Setting].

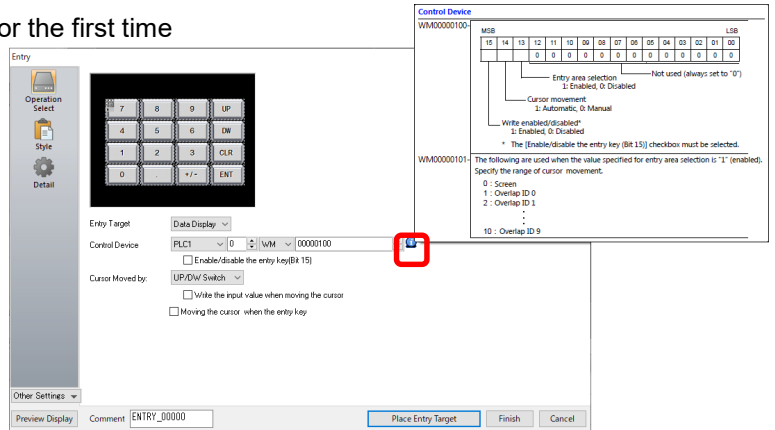
* When changing the menu display, reboot V-SFT-6.

Usage Examples

Example 1: When creating a screen program for the first time

Select **Ver6 Style** for displaying part settings!

Details of settings can be viewed by hovering the mouse cursor over the information icon (i). You can ensure that settings are done because settings are confirmed by clicking the [Finish] button.

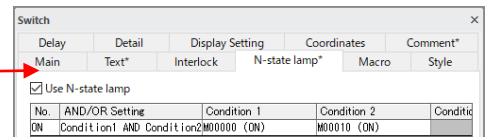


Example 2: When checking settings of an existing screen program

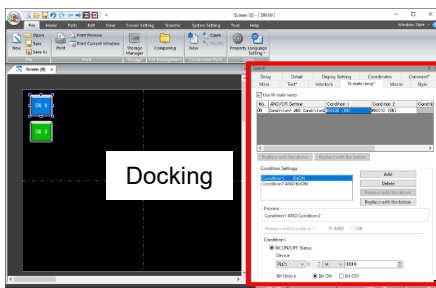
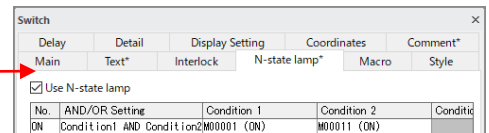
Select **Ver5 Style** for displaying part settings!

You can view settings quickly by single-clicking* a switch. Clicking the next switch will change the contents of the item view pane accordingly. Docked display with the screen configuration area is possible!

1) Click the [SW_A] switch. The settings for the [SW_A] switch are displayed.



2) Click the [SW_B] switch. The displayed contents changes to the [SW_B] switch.



* Deselect the [File] → [Property] → [General] tab → [Prohibit Item View Display by Single Click] check box.