

<Useful Information>

**Achieve Debugging Close to that Using the Actual Equipment
by Using Only a PC!**

- Fuji Electric's SX-Programmer and TELLUS-HMI -

Before

The actual equipment is necessary in order to check operations together with the PLC ladder.



The emulator function of V-SFT-6 cannot run a ladder.

Equipment needs to be modified, but since the equipment is at the production site I can't check the operation...

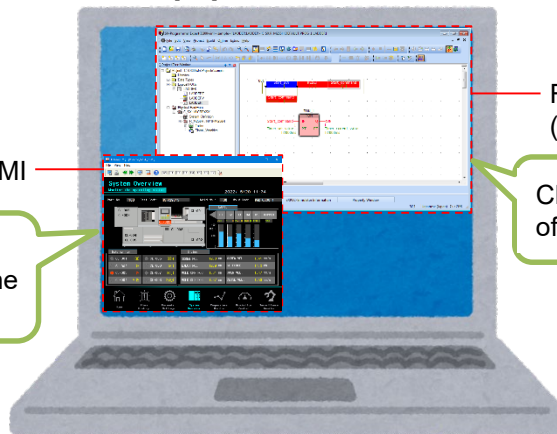


Fuji Electric's MICREX-SX

Solve this problem using Fuji Electric's SX-Programmer (Expert/Standard) and TELLUS-HMI!

After

By using SX-Programmer and TELLUS-HMI, debugging is possible even without the actual equipment!



TELLUS-HMI

Fuji Electric's SX-Programmer (Expert/Standard)

Check the operations of the V9 on a PC! *1

Check the operations of the PLC on a PC!

I can build a program and check the operation right away!

Testing a program on a running machine is risky so this is great!

Supported PLC Models
MICREX-SX (Ethernet)

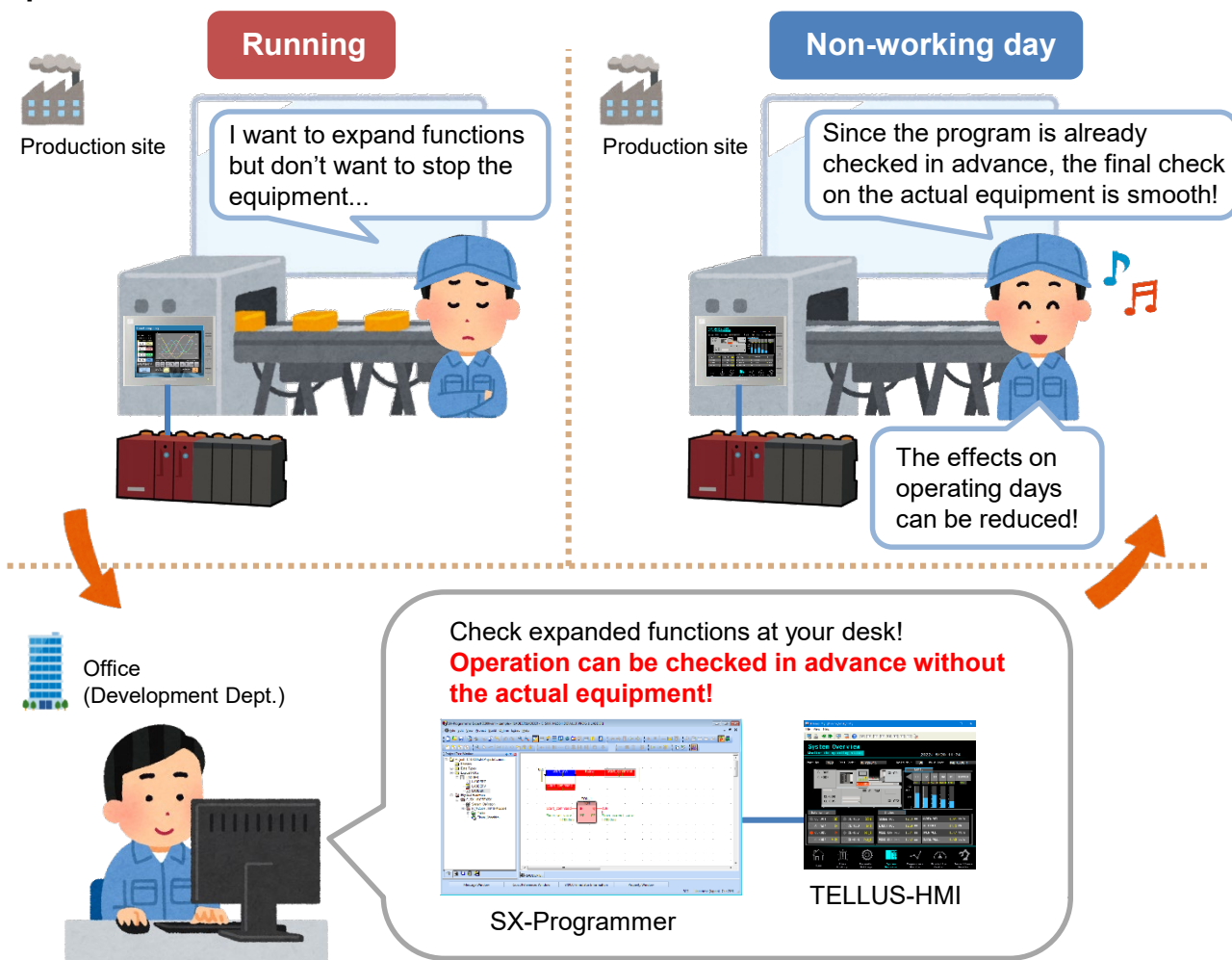
*1 Some functions cannot be used.

Items Necessary for Offline Simulation

- **Screen configuration software: V-SFT-6**
- **SOFT MONITOUCH: TELLUS**
 A trial version can be downloaded from our website.
 (Note that the software will shut down after one hour of operating.)
<https://monitouch.fujielectric.com/site/support-e/download-index-01.html>
- **PLC loader software: SX-Programmer**
 Expert: Ver. 3.6.14.22 or later, Standard: Ver. 3.1.0.13 or later

Usage Example

When modifying equipment that is currently running at the production site in order to expand functions



For details, refer to “Technical Information (TI-T-0004)”.
 Download [here](#).