

**<Useful Information>**  
**Achieve Debugging Close to that Using the Actual Equipment**  
**by Using Only a PC!**  
**- Yokogawa Electric's Virtual-M3 and TELLUS-HMI -**

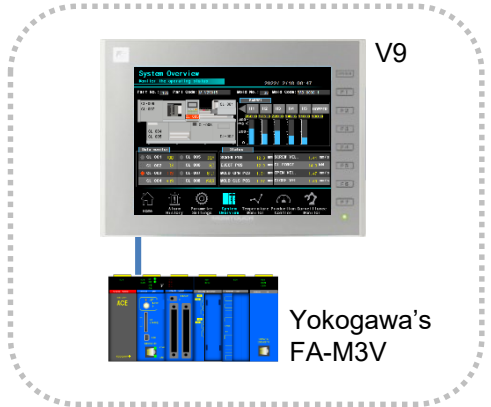
**Before**

The actual equipment is necessary in order to check operations together with the PLC ladder.



The emulator function of V-SFT-6 cannot run a ladder.

Waiting until the actual equipment arrives and then checking is like wasting time...



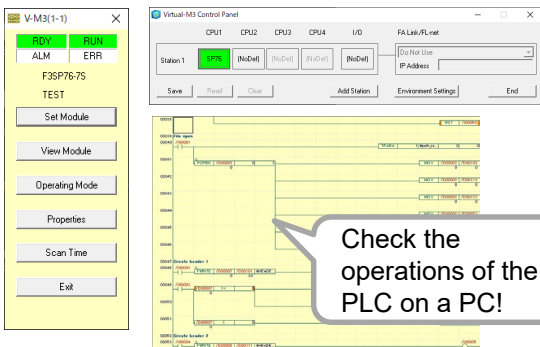
**Solve this problem using Yokogawa Electric's Virtual-M3 and TELLUS-HMI!**

**After**

By using Virtual-M3 and TELLUS-HMI, debugging is possible even without the actual equipment!

Yokogawa Electric's simulation software Virtual-M3

TELLUS-HMI



Check the operations of the PLC on a PC!

Check the operations of the V9 on a PC!

I can build a program and check the operation right away!

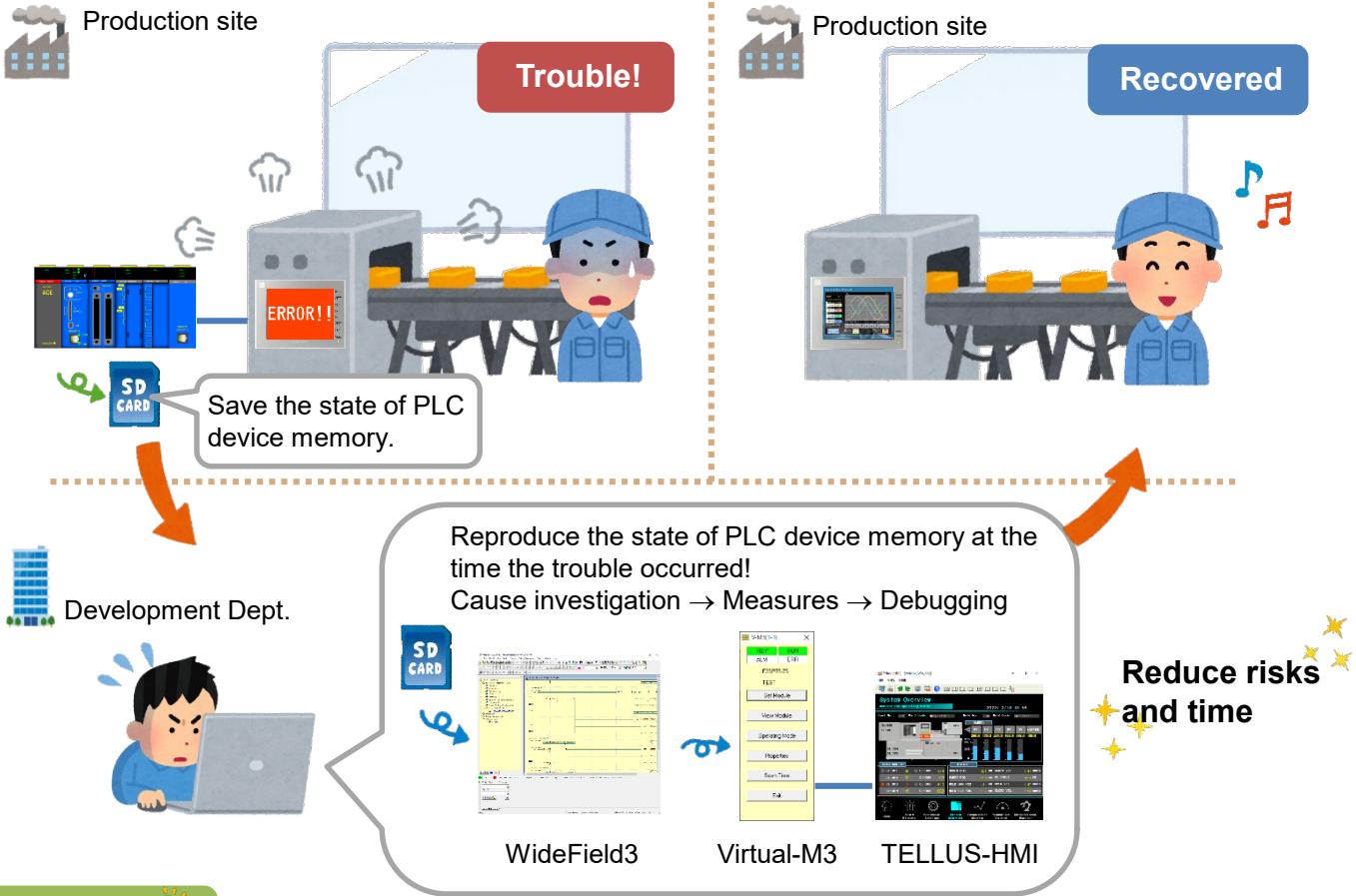
Testing a program on a running machine is risky so this is great!

**Examples of CPU modules (Yokogawa Electric)**

- F3SP71-4S      F3SP76-7S
- F3SP67-6S      F3SP66-4S

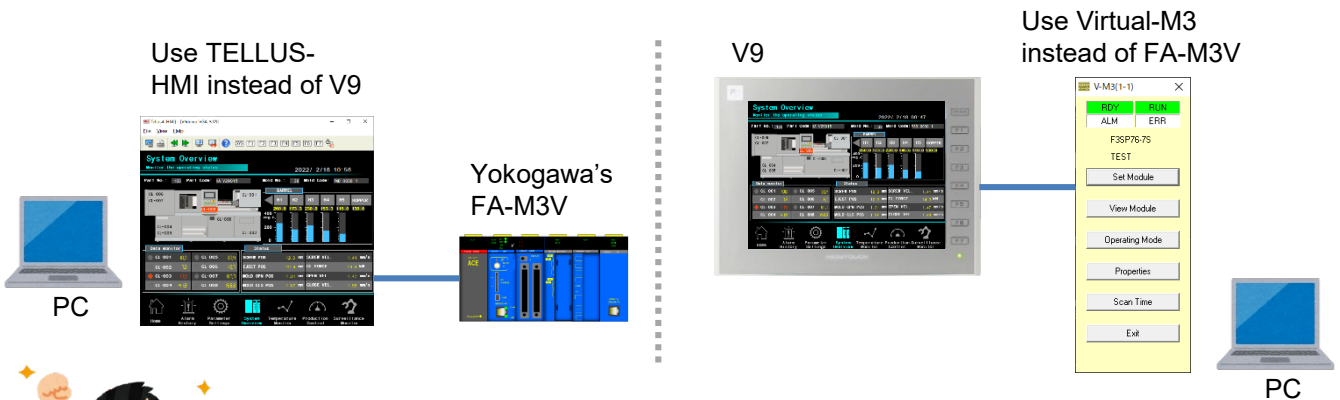


**Debugging is possible even without the actual equipment, so you can respond to trouble swiftly!  
 Reproduce the moment that the trouble occurred by using the one-touch playback function of Virtual-M3!**



Also

**Communication between the actual equipment and a PC app is possible as well!**



**Perform debugging more efficiently and more easily!**