

Introduction of Simple Settings (Closing an Overlap)

Overlap Closing Function of Switches (V9/X1) Ver. 6.1.3.0 and above

Before

When modifying an existing screen program, a switch was added to close an overlap display, but the switch won't function...



Showing and hiding of warnings is controlled by PLC



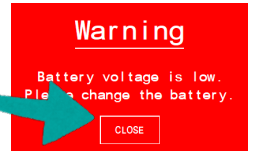
Operator

I want to see what's displayed behind the overlap... Can you modify the data to close the overlap after checking the warning?



Engineer trying to modify for the first time

Okay! I'll add a "CLOSE" switch!



After change...



Transfer cable

Oh no... The "CLOSE" switch doesn't work!



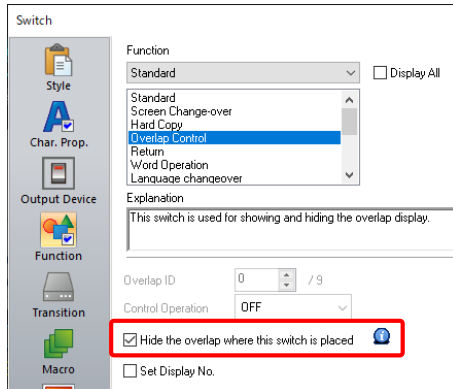
Engineer

I have no idea which setting should be changed...

After

Solve this problem by simply selecting a checkbox! No more struggling to turn off an overlap display!

Change the bat



Just simply select the **[Hide the overlap where this switch is placed]** checkbox that is added to "Overlap Control" of switch functions!

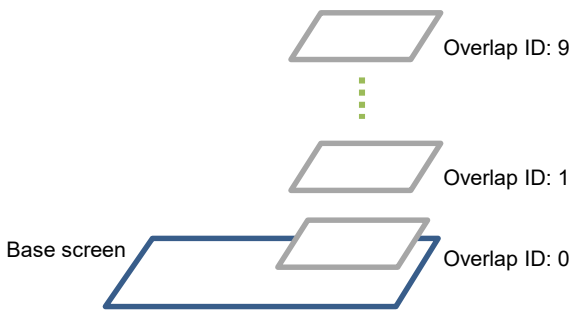
This is easy!



Engineer

What is an overlap display?

An overlap display is a window that can be displayed in the foreground of the base screen.



Up to 10 overlaps, ID 0 to 9, can be displayed at the same time.

It's like preparing a transparent sheet and placing a picture on it!

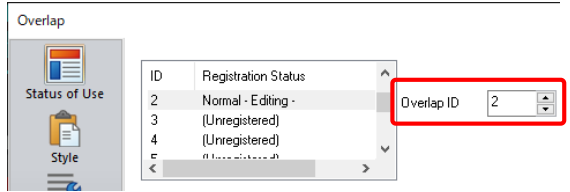
The overlap ID is used to distinguish each sheet!

An available overlap ID is automatically allocated when a normal overlap display or multi-/call- overlap icon is placed on the screen.

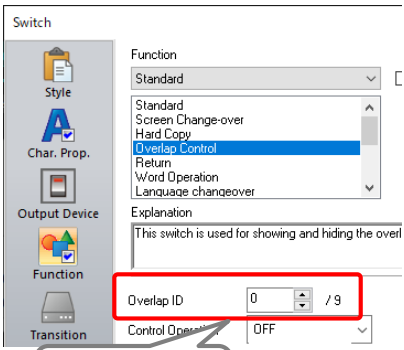
When an overlap is copied to a different screen program or screen, its overlap ID may change depending on the configuration of the destination.

Why didn't the switch function in the example shown at "Before"?

The switch will not function if the overlap IDs specified on the overlap itself and the switch do not match!



Overlap ID: 2



Overlap ID: 0 (default)



I see! The overlap IDs must match!

When using the [Hide the overlap where this switch is placed] setting, there is no need to worry about the overlap ID! And it also makes it easier to utilize overlap displays on other screens and screen programs!

Try out this simplified screen program configuration method!

