

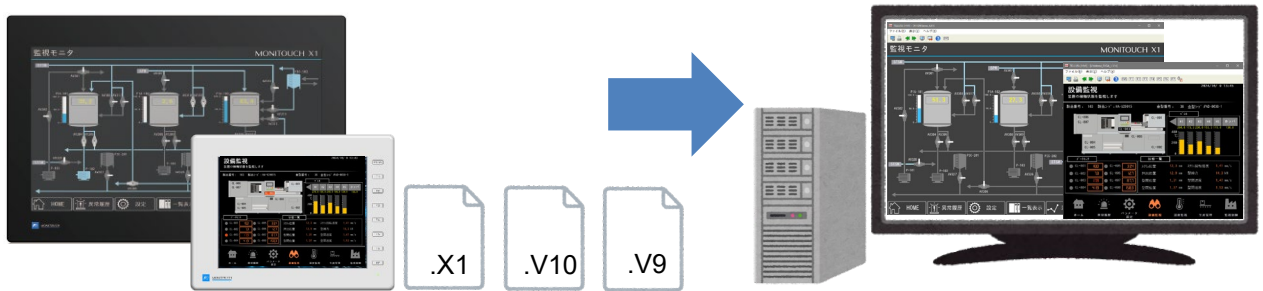
Soft MONITOUCH TELLUS Ver. 5 has been launched!

V10/V9/X1 series screen programs supported!

The existing V10/V9/X1 screen programs can be used without any modification on TELLUS. *

HMI Mode: Connect a PC or Windows tablet directly to the PLC.
The V10 or X1 screen program can be run and operated on the PC.

Remote Mode: Connect a PC or Windows tablet to the V10 or X1 via LAN.
Remote monitoring and operation is possible.



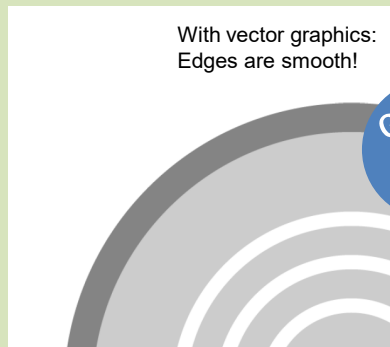
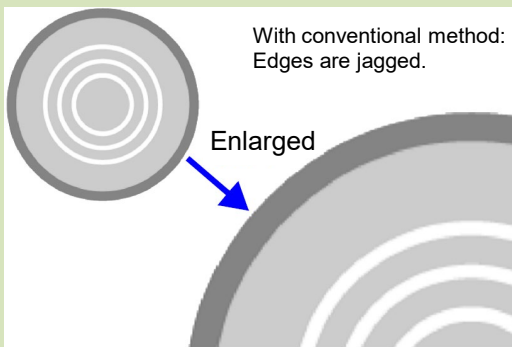
* Some limitations apply. Please refer to the TELLUS manual for details.

Point

Vector Graphics is available!

Supported screen program: X1/TELLUS Ver. 5

Vector graphics enable high quality rendering even after scaling to any size.



It enables the creation of screens with sophisticated designs!

Point

Supports application startup with switch function and PLC command!

User applications can be activated with easy setup.

Switch function:
Start application



PLC command:
Start application Settings



Easy setup without any macros!
Time is saved in screen analysis and configuration changes, even if the designer changes!

Functional improvements to the TELLUS dedicated screen program

.TL5

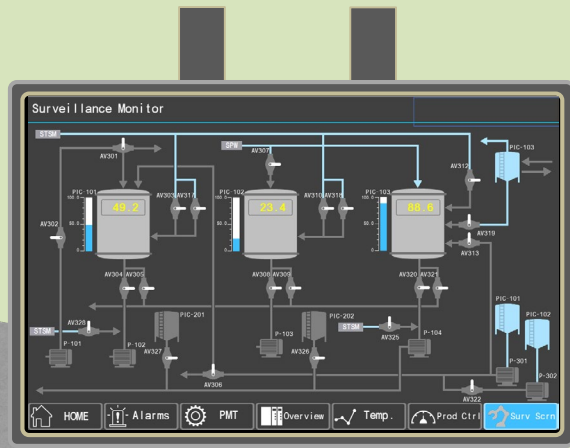
Point Max. resolution: 4K supported!

Supported screen program: TELLUS Ver. 5

TELLUS Ver. 4
1920 x 1080

4 times! TELLUS Ver. 5
3840 x 2160

E.g. Andon monitor



Point The number of items placed on one screen is expanded to double!

TELLUS Ver.4
4096 items

Double! TELLUS Ver. 5
8192 items



Large display shows the entire screen with a lot of information, making it easy to grasp the situation.

Supported items:
Switch, Lamp, Num. Display, Char. Display, Message Display,
Time Display, Bar Graph, Pie Graph, Closed Area Graph,
Panel Meter

TELLUS Ver. 5 supported models

License

Model	Extension
V10 series	.V10/.V10Y/.V10Z
X1 series	.X1/.X1Y/.X1Z
TELLUS Ver. 5	.TL5/.TL5Y/.TL5Z
V9 series	.V9/.V9Y/.V9Z
TELLUS Ver. 4	.V9/.V9Y/.V9Z

Type	Part Number
Password validation	TELLUS-HMI
	TELLUS-Remote
	TELLUS and V-Server
USB license key	TELLUS-HMI USB Key
	TELLUS-Remote USB Key
	TELLUS and V-Server USB Key

* If you purchased a license before TELLUS Ver. 5 was released (before 10/31/2024), you will need to purchase a new license to use the V10/X1/TELLUS Ver. 5 screen program. V9/TELLUS Ver. 4 screen programs can be used with a continuing license. For more information, refer to the TELLUS manual.

