

V9 series – Portrait display mode supported

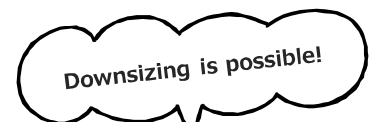
All V9 panels support portrait display, with rotation in both right and left. Screen configuration in both directions is also possible.

- Portrait mode
- Flat, seamless glass surface (for Advanced models)

Portrait mode

Portrait mode supported in all models and sizes

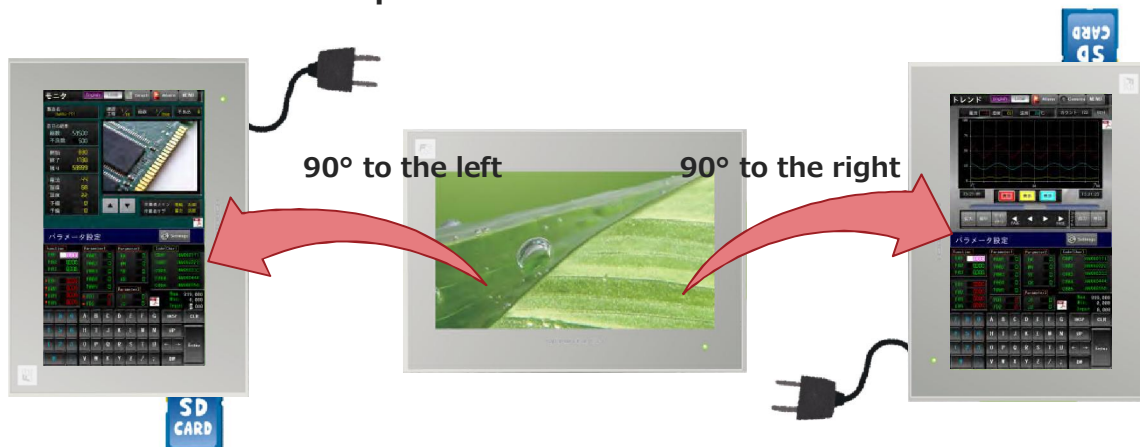
15" to 5.7" of all Advanced/Standard/Lite models support **portrait mode**. Good solution for control boxes with smaller width.



Machine builders

Right/left rotation

You can rotate the screen in **both right and left direction** for easier installation in the limited installation space.

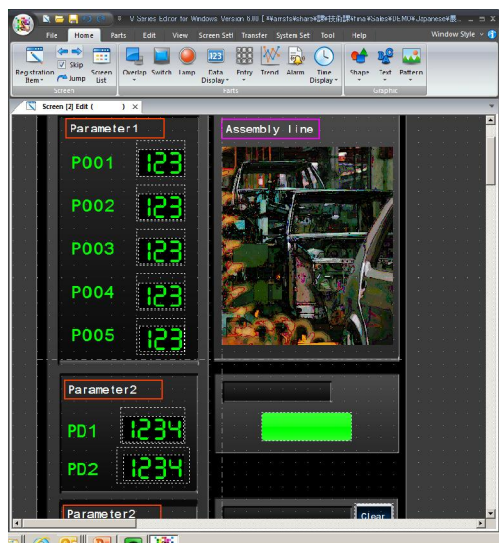


V9 panels without logo and function switches printed on their surface sheets are also available. Please contact Hakko representative for further details.

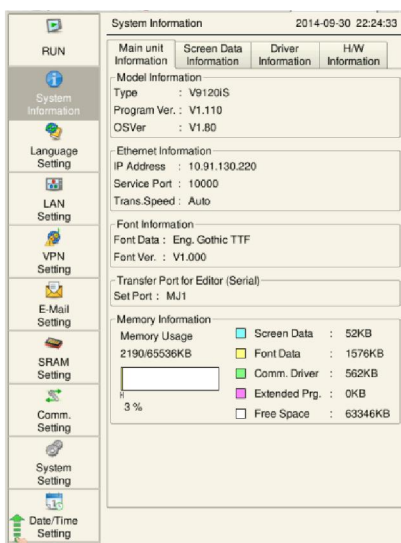
Vertical screen configuration and local screen display in portrait direction

V-SFT-6 support screen editing in vertical direction that helps you easy configuration by looking at vertical screen images.

Local screen display in portrait mode is also possible, including operation log, PDF viewer, and so on.



[V-SFT Ver. 6 edit screen]



[Local screen]

Date / Time	Action	Func
2014/09/30 22:18	ModeChg	To Run
2014/09/30 22:18	DataChg	Numerical Data
2014/09/30 22:18	Switch Action	Screen
2014/09/30 22:18	ScrnChg	
2014/09/30 22:18	DataChg	Numerical Data
2014/09/30 22:18	DataChg	Numerical Data
2014/09/30 22:19	ModeChg	To Local
2014/09/30 22:19	Trans	Screen Data
2014/09/30 22:19	ModeChg	To Run
2014/09/30 22:19	Switch Action	Screen
2014/09/30 22:19	ScrnChg	
2014/09/30 22:19	Switch Action	Screen
2014/09/30 22:19	Switch Action	Screen
2014/09/30 22:19	ScrnChg	
2014/09/30 22:19	ScrnChg	
2014/09/30 22:19	ScrnChg	
2014/09/30 22:19	ScrnChg	
2014/09/30 22:19	ScrnChg	
2014/09/30 22:19	ScrnChg	
2014/09/30 22:19	ScrnChg	
2014/09/30 22:19	ScrnChg	
2014/09/30 22:19	ScrnChg	
2014/09/30 22:19	ScrnChg	
2014/09/30 22:19	ScrnChg	
2014/09/30 22:20	ModeChg	To Local

[System screen]
(e.g.: operation log)

Flat, seamless glass surface

Advanced models



Advanced models employs glass surface to achieve **smooth flat architecture**.

The smooth surface for easy cleaning keeps hygienic environment.

Housing color is suitable for clean production sites such as food processing facility or cosmetic product equipment.



Hakko Electronics Co., Ltd.

Overseas Sales Dept.
TEL: +81-76-274-2144 FAX: +81-76-274-5136
<http://monitouch.fujielectric.com/>