

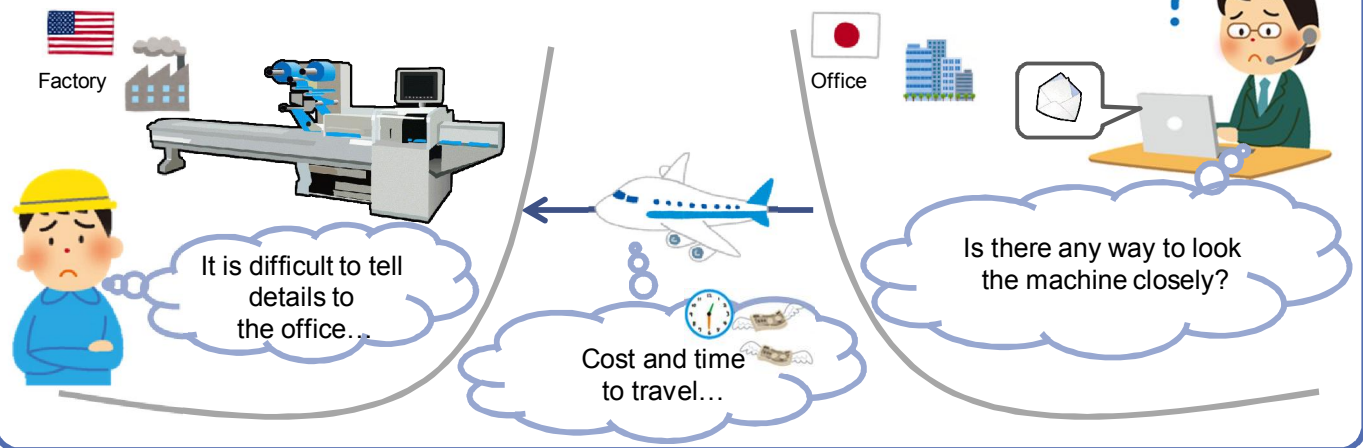
V9's VPN application - wearable devices

By connecting a wearable device such as a wearable camera with V9, you can see and handle the problem without ever leaving your office!

* Wearable devices: Generic name of the devices which are used by wearing them.

BEFORE

It is difficult to understand the situation by phone or email. But it actually was possible to solve in a simple way...

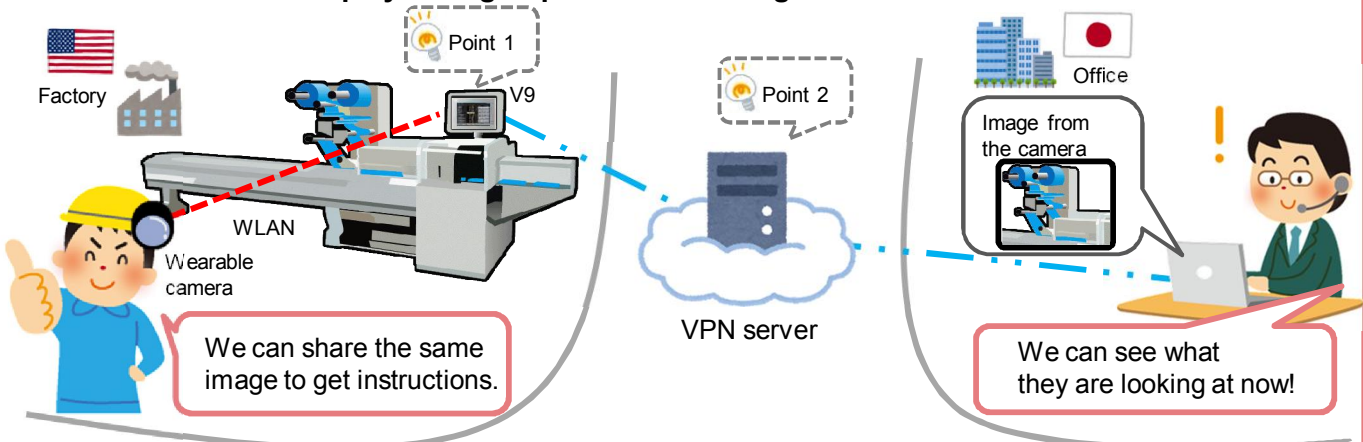


Use V9 and Web Machine Interface Service to solve the problem!

AFTER

Remote access is easily achieved!

If you have a wearable camera, you can connect it to V9 as a gateway, which helps you to grasp the status and give instructions.



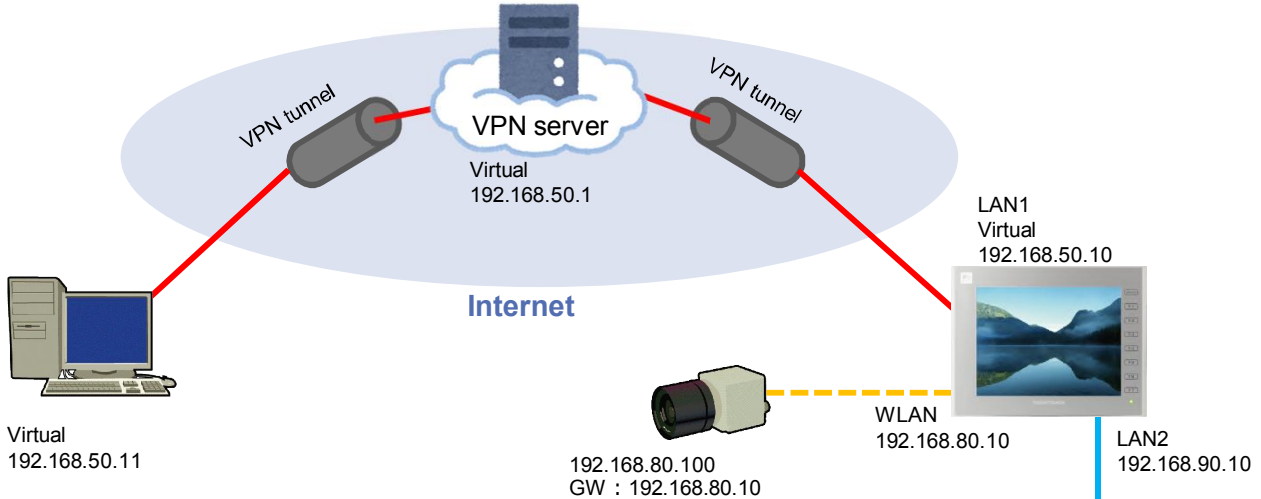
Secure, safe, and reasonable remote access by utilizing the VPN service of our Web Machine Interface.

See the next page for the point 1 and 2. 

Point 1) Easy remote access to peripheral devices

V9 with LAN x 2CH/3CH can have multiple IP addresses.

Connection between the V9 each device can be either wired or wireless.



Routing function helps you to access to the Ethernet devices on the same network as V9's.



For example,

- 1) By using V9's WLAN as a gateway...
You can access to the wearable or network camera linked to the V9.
- 2) By using V9's LAN2 port as a gateway...
It is possible to access the PLC on the LAN2 from the PC.

192.168.90.100
GW:192.168.90.10
*GW...Gateway

Point 2) Safe remote access



Using VPN helps you to prevent the data from wiretapping or falsification by capsulizing and encrypting the data.



As V9 supports SSL-VPN, you can connect it anywhere and anytime, without worrying about the firewall.

Secure and safe remote access, it is worth trying!



Hakko Electronics Co., Ltd.

Overseas Sales Dept.
TEL: +81-76-274-2144 FAX: +81-76-274-5136
<http://monitouch.fujielectric.com/>