



V-SFT Ver. 6.2.4.0 Update Information

	V10	V9	TSi/TS	V8i(N)/V8(N)	X1
System program	Ver. 1.300	Ver. 3.100	Ver. 2.440	Ver. 2.390	Ver. 1.800 ^{*2}
OS	Ver. 1.40 ^{*1}	Ver. 4.90 ^{*1}			

^{*1} Storage is necessary for updating.

^{*2} Please download the X1 update program from our website. For the update procedure, refer to the "Update Procedure" provided with the update program.

Function

1 V10 Series EPSON Added printer compatible model

<Overview>

The number of printer models that can be connected to the V10 series has increased.

*** OS updating is necessary.**

For more information, see : https://monitouch.fujielectric.com/img/en/pdf/printer_list_e.pdf

Configuration Software

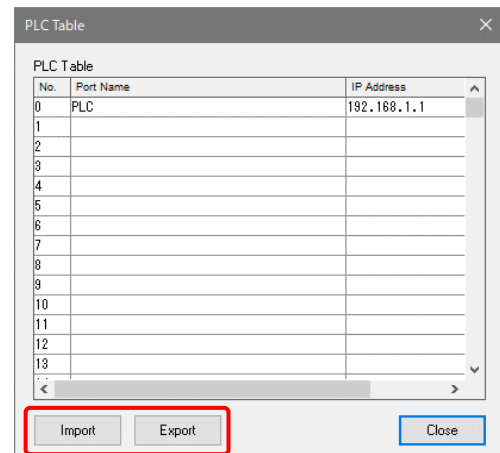
1 PLC Tabel: Import / Export

<Overview>

IP addresses, port No., etc. registered in the PLC table can be exported to a CSV file and imported to another screen data.

<Setting location>

[Import] / [Export] in [System Setting] → [Hardware Setting] → [PLC Properties] → [Target Settings] → [PLC Table].



2 Tag-related specification improvements

■ Deleting unused tags

<Overview>

When deleting unused tags in a screen data, you can select how to delete tags in the structure.

<Applicable devices>

- OMRON: N series (EtherNet/IP)
- Siemens: S7-1200/1500 Tag (Ethernet ISOTCP)
- Siemens: S7-1200/1500 Optimized Tag (Ethernet ISOTCP)
- Allen-Bradley: ControlLogix/CompactLogix tag
- Allen-Bradley: ControlLogix/CompactLogix Tag (Ethernet TCP/IP)
- Allen-Bradley: Micro800 Controllers Tag
- Allen-Bradley: Micro800 Controllers Tag (Ethernet TCP/IP)
- BECKHOFF: Tag ADS Protocol (Ethernet)
- CODESYS: CODESYS V3 (Ethernet)

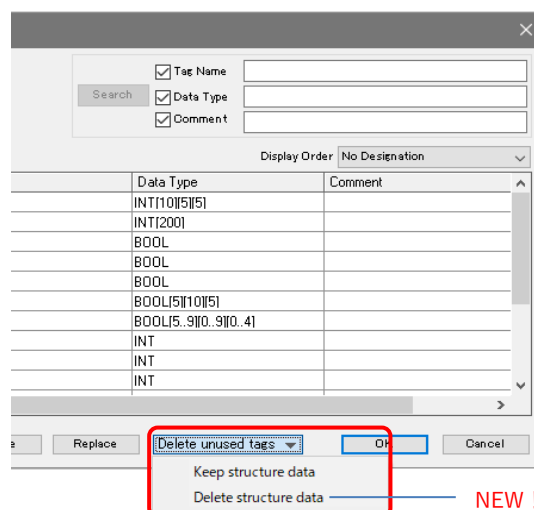
<Setting location>

[Tag Edit] → [Delete unused tags]

- [Keep structure data] (Existing behavior)
If some tags in a structure are in use, leave all tags in the structure and delete all other unused tags.
- [Delete structure data] **NEW!**
Delete all unused tags, including tags in the structure.

<Note>

Tags cannot be restored after deleted. If necessary, reimport them.



Configuration Software

Continue →

■ Siemens: Importing tags

<Overview>

When importing Siemens tags, it is supported to import tags using "-" (hyphen)".

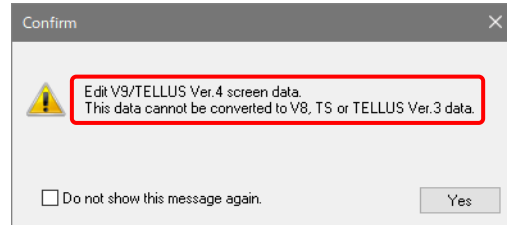
<Applicable devices>

- Siemens: S7-1200/1500 Tag (Ethernet ISOTCP)
- Siemens: S7-1200/1500 Optimized Tag (Ethernet ISOTCP)

3 Improvement of the warning message when opening a screen data of X1, V10 and V9

<Overview>

The warning message displayed when opening the screen data of V10, V9, or X1 has been improved as follows.



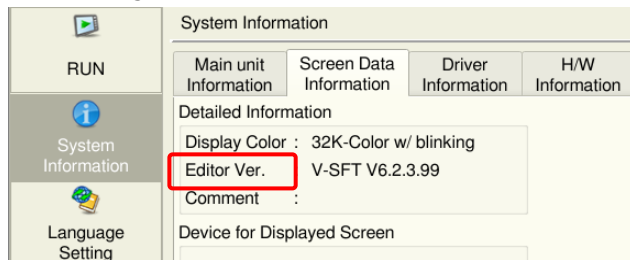
Other

1 Partial representation change of the Local mode screen

<Overview>

The item names of [System Information] → [Screen Data Information] → [Detailed Information] on the Local mode screen have been changed.

Before change



After change

