

Tag Edit Function Introduction

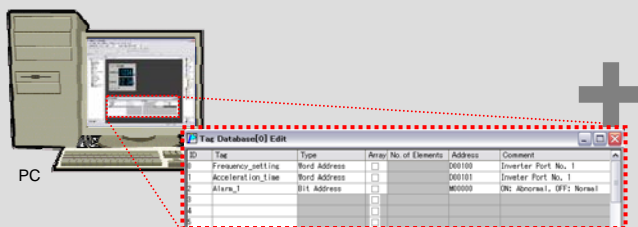
There are various advantages by using Tag Edit function.

- It is possible to configure the screen program without considering about the internal memory of MONITOUCH if you use tag variable area.
- Man-hour can be reduced since it is possible to configure the screen program without referring to the memory table.
- Batch change of the memory setting of the parts set in the multiple screens is possible only by changing the registered memory in Tag Database.

“Tag Edit” is a function to register the independent names to PLC memory or internal memory and use those registered names for setting memory in your screen program configuration.

- Tag Registration

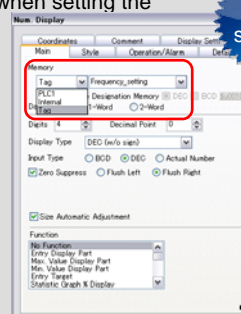
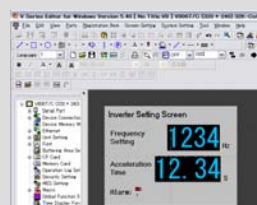
Allocate the tag (independent name) to PLC memory or internal memory.



Tag Database Edit

- Memory Setting

Select “Tag” for memory type when setting the memory for the parts.



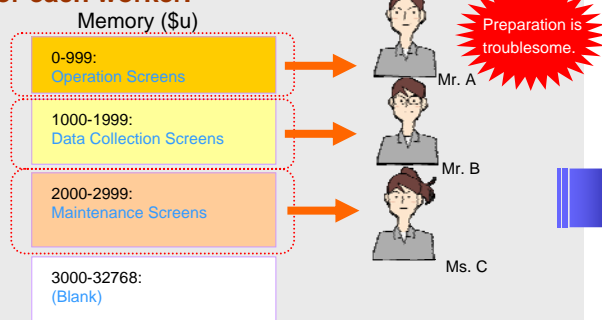
Easy setting

Reduce man-hour drastically by using Tag Edit Function

[Traditional Way]

For example, when configuring one screen program by dividing into different use applications/functions, it takes time for creating the memory table and etc. before starting the screen configuration.

1) It is required to allocate the memory use area for each worker.



2) Creation of the memory table is required.

In addition, it is required to set the memory of the screen by referring to the created memory table.



Memory Table

[Tag Edit Function]

It is possible to divide the screen configuration work among several workers without taking time for advance preparation.

1) There is no need to aware of the memory by using tag variable area.

By using tag variable area, which does not have the memory, it is possible to configure the screen program by using an independent name, and also there is no need to allocate the memory to the workers.



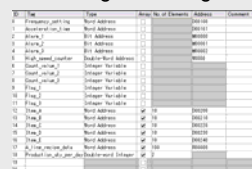
MONITOUCH V8 Series

Variable Designation (DRAM)

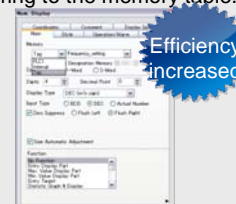
| | |
|------------------------------|-----------------|
| Bit Variable | } = 4,096 words |
| Integer Variable | |
| Double-Word Integer Variable | } = 4,096 words |
| Real Number Variable | |

2) Memory table is not required by tag registration.

It is possible to configure the screen program by selecting from the registered tag list without referring to the memory table.



Tag Database Edit



Efficiency increased

- Man-hour can be reduced for memory change by using Tag Edit function.

Memory change work that is required at the time of the connection device change or specifications change of the existing screen is completed only by changing the memory in Tag Database Edit screen. It is possible to reduce man-hour drastically since there is no need to change the memory in each screen.

