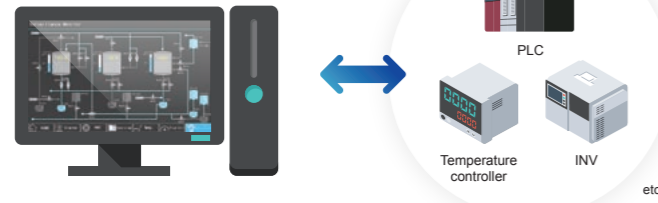


Wide variety of equipment supported by TELLUS and V-Server

TELLUS and V-Server



77 manufacturers
459*1 protocols

*1 As of October 2024

Compatible Equipment List

<https://monitouch.fujielectric.com/site/tellus-e/tellus04-01.html>



Safety Considerations

- For safe operation, read the instruction manual or user manual that comes with the product carefully or consult the distributor from which you purchased the product, before using the product.
- Products introduced in this catalog have not been designed or manufactured for such applications in a system or equipment that will affect human bodies or lives.
- Customers, who want to use the products introduced in this catalog for special systems or devices such as for atomic-energy control, aerospace use, medical use, passenger vehicle, and traffic control, are requested to consult the Hakko Overseas Sales Section.
- Customers are requested to prepare safety measures when they apply the products introduced in this catalog to such systems or facilities that will affect human lives or cause severe damage to property if the products become faulty.
- For safe operation, wiring should be conducted only by qualified engineers who have sufficient technical knowledge about electrical work or wiring.

Notes to consider before purchasing

- Appearance and specifications are subject to modification without prior notice due to technical improvements.
- Colors in the catalog may differ from the actual colors due to printing inaccuracies.
- Consult your distributor or us for further information about products in this catalog.

www.monitouch.com

Sales company :

Fuji Electric Co., Ltd.
URL : www.fujielectric.com/
Gate City Ohsaki, East Tower,
11-2, Osaki 1-chome, Shinagawa-ku,
Tokyo 141-0032, Japan
Phone : +81-3-5435-7066
Fax : +81-3-5435-7475

Manufacturer :

Hakko Electronics Co., Ltd.
URL : www.monitouch.com/
890-1 Kamikashiwano-machi,
Hakusan, Ishikawa 924-0035, Japan
Phone : +81-76-274-2144
Fax : +81-76-274-5136
E-mail : sales@hakko-elec.co.jp

Distributor

* Product specifications and design are subject to modification.
* Combined images are used for the screen images.
* Product colors may differ from colors in brochure photos due to printing.
* Windows and Excel are trademarks of Microsoft (USA) in the U.S. and other countries.
* Other company and product names in this brochure are registered trademarks.

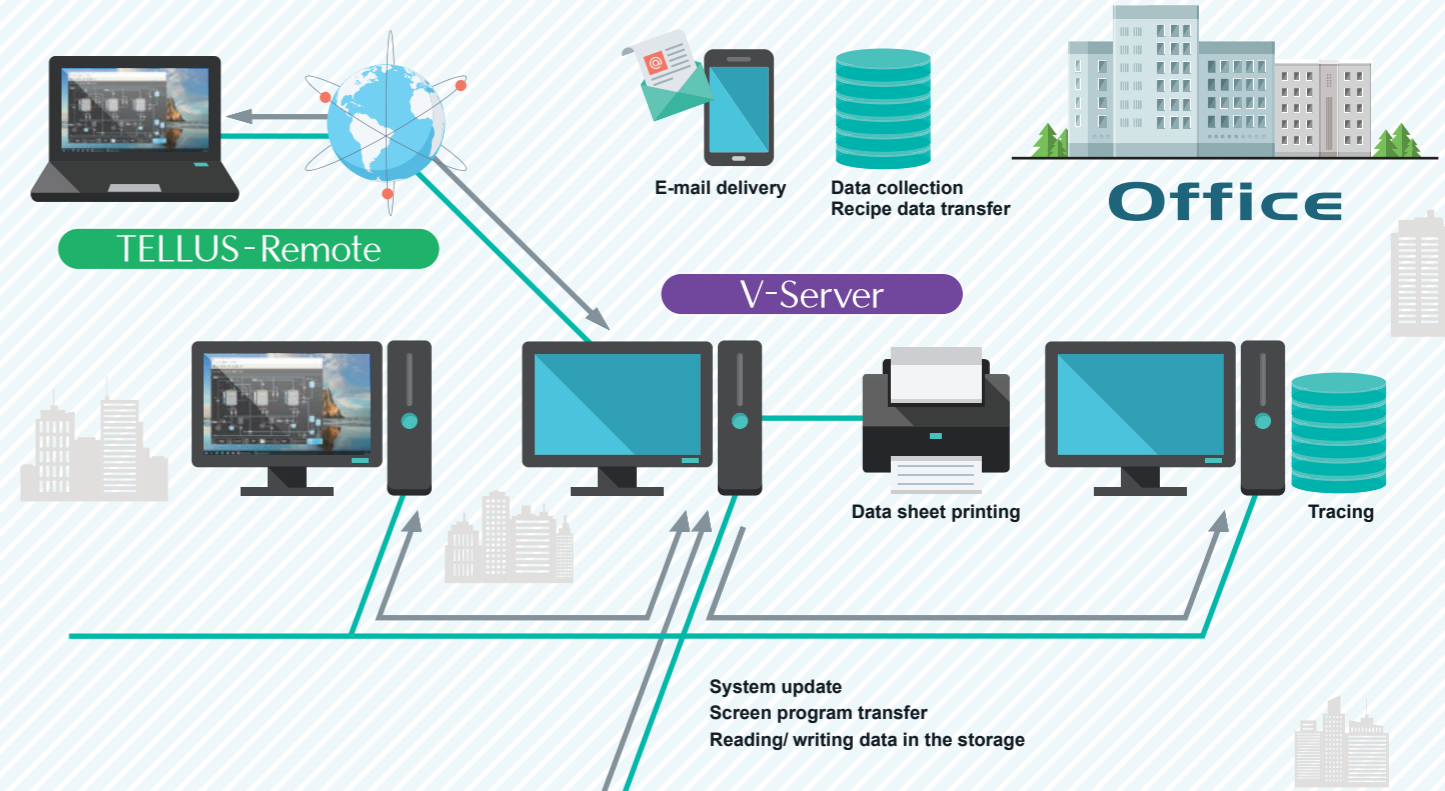
SOFT MONITOUCH

TELLUS and V-Server

Bringing the factory floor to your desk



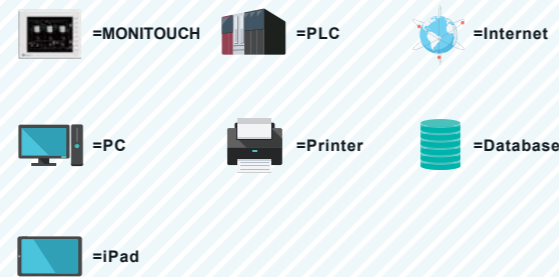
TELLUS and V-Server links MONITOUCH in a factory with a PC in the office, so that you can remotely collect on-site data or monitor and control the equipment in the factory. This combination enables efficient and low-cost production; immediate and appropriate responses to the condition of the production line is possible from anywhere.



V-Server P.4

Collection and saving of current data

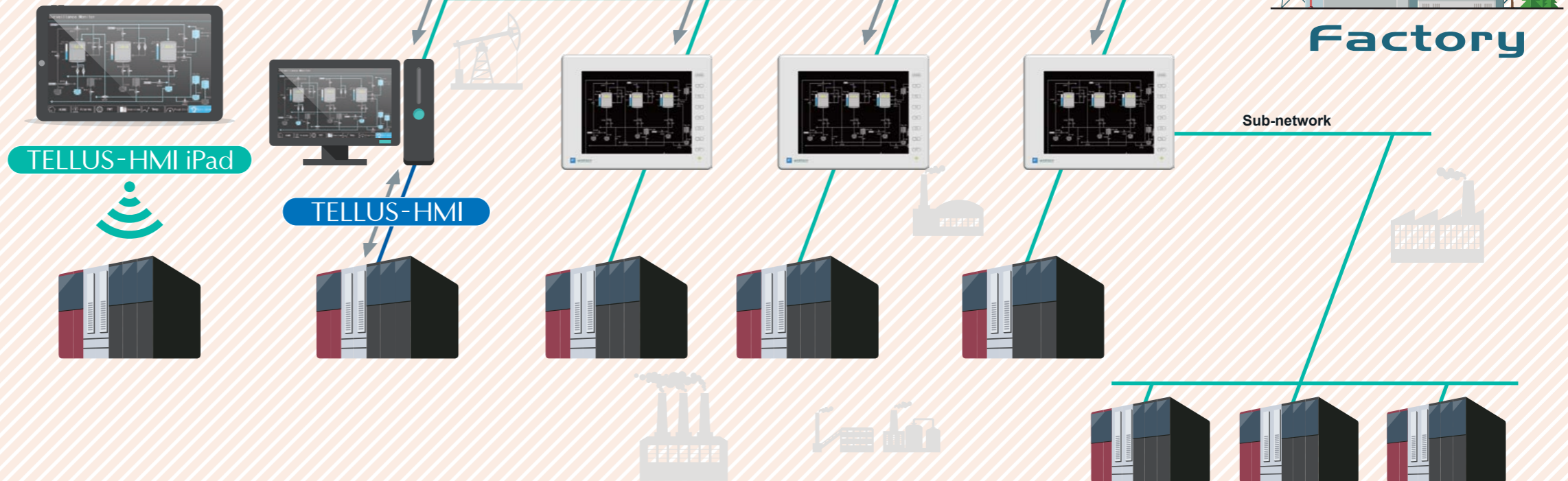
Linkage of a PC and MONITOUCH via Ethernet enables collection and saving of on-site data in real time.



TELLUS-Remote P.6

Remote monitoring and control

Installation of the TELLUS and V-Server software package allows your PC to monitor and control the production site via MONITOUCH through Ethernet.



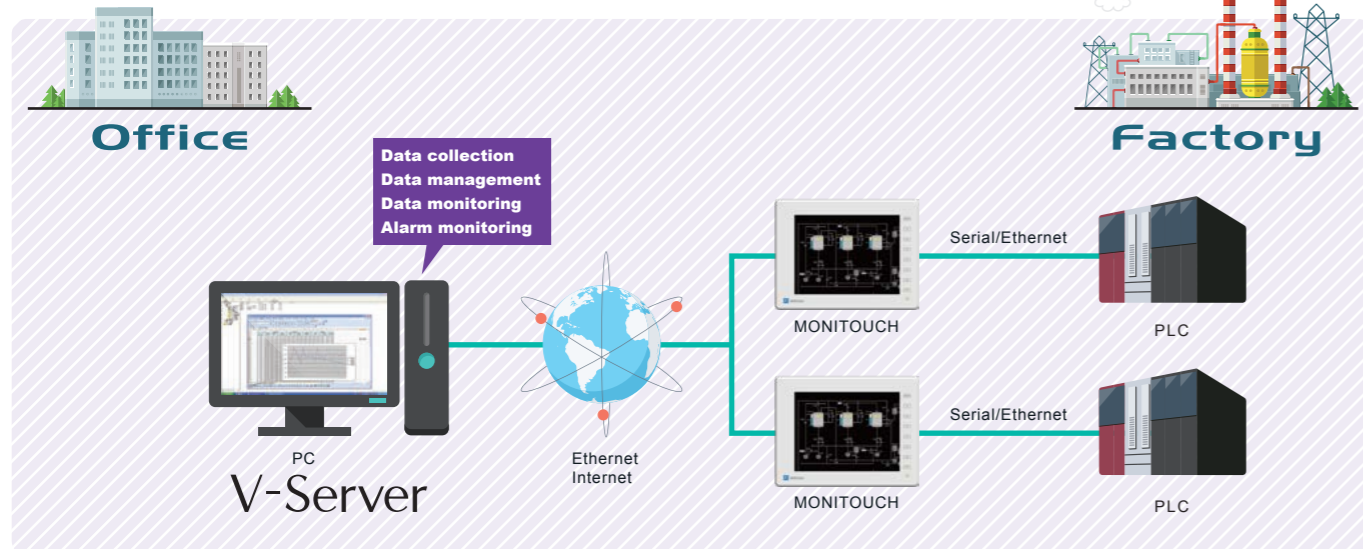
TELLUS-HMI P.7

MONITOUCH functions available on your PC/iPad

Equivalent functions of MONITOUCH are available on your PC or iPad by directly connecting to PLC after installing TELLUS software. It is possible to show a screen image on a large PC display and link various Windows applications. By using on iPad, the control panel becomes portable.

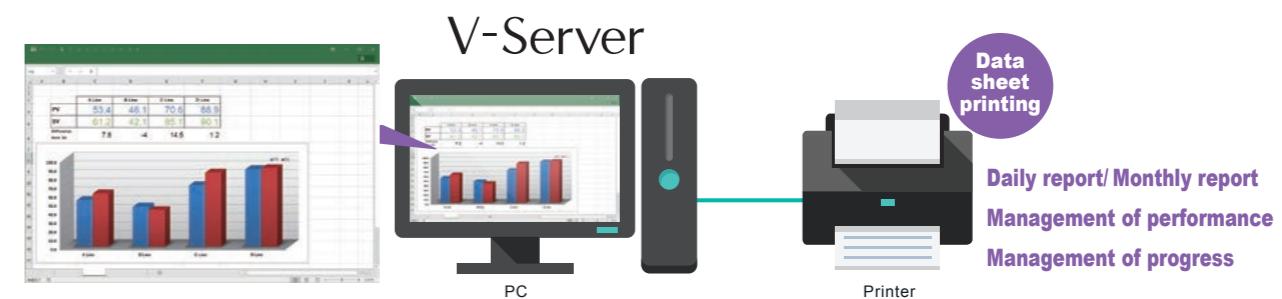
Linking your office and factory for collection of production data

V-Server

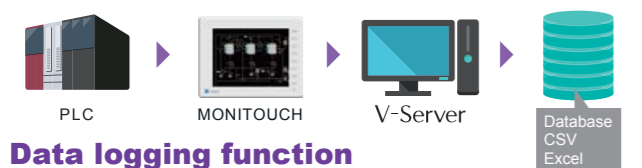


Easy to make daily and monthly reports (DDE function)

The tag data registered in V-Server can be pasted to Excel spreadsheet in DDE format. This makes it easy to generate daily/monthly reports.



Data saving without programming



Data logging function

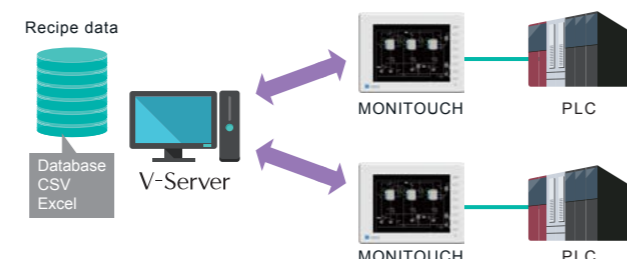
Production data can be regularly read out and saved in database or CSV/ Excel format.

Readout of sampling data

Sampling data stored in MONITOUCH can be read out and saved in database or CSV/ Excel format.

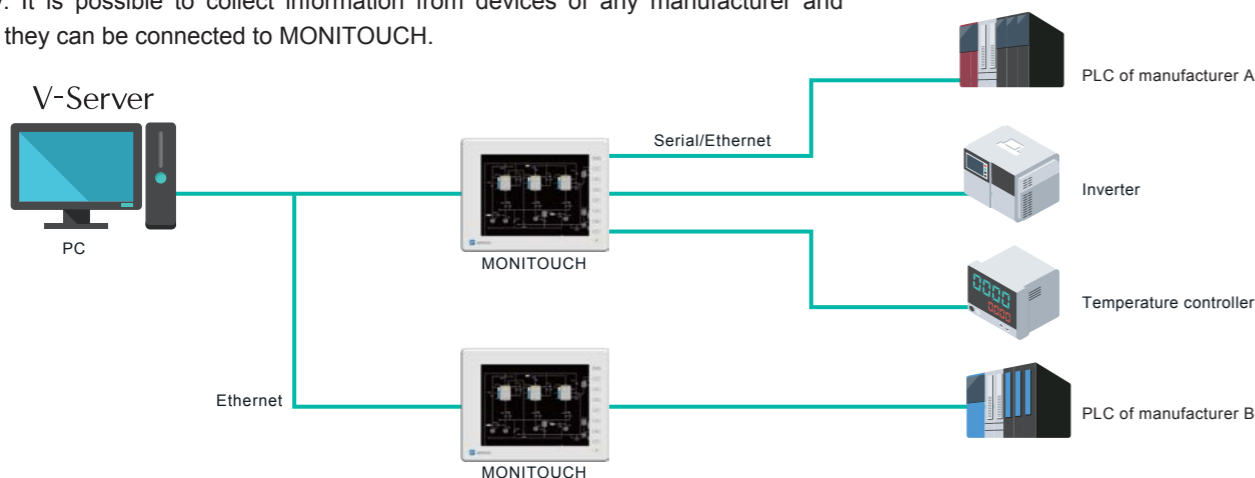
Consolidated recipe data management

Consolidation of recipe data by the host PC reduces the process of recipe registration and modification for each equipment and provides consistent production control.



Consolidated data management for PLCs from various manufacturers and models

V-Server collects information from peripheral devices through MONITOUCH as a gateway. It is possible to collect information from devices of any manufacturer and model if they can be connected to MONITOUCH.



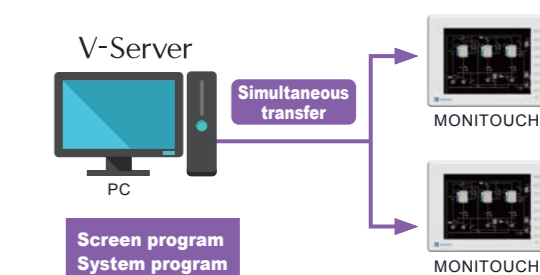
Quick response to on-site problems

Alarm data can be monitored to display historical data or a list of alarms currently occurring. In addition, an e-mail alert can be sent immediately when a critical alarm occurs.



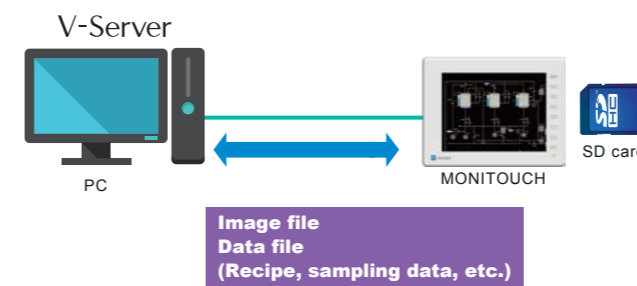
Updating of MONITOUCH data from the office

You can update the system program of multiple MONITOUCH panels at a time or transfer the screen program to them all together.



Reading and writing of stored data

Files on a SD card inserted in MONITOUCH can be read out to a PC, and files edited on a PC can be written onto a SD card via Ethernet.



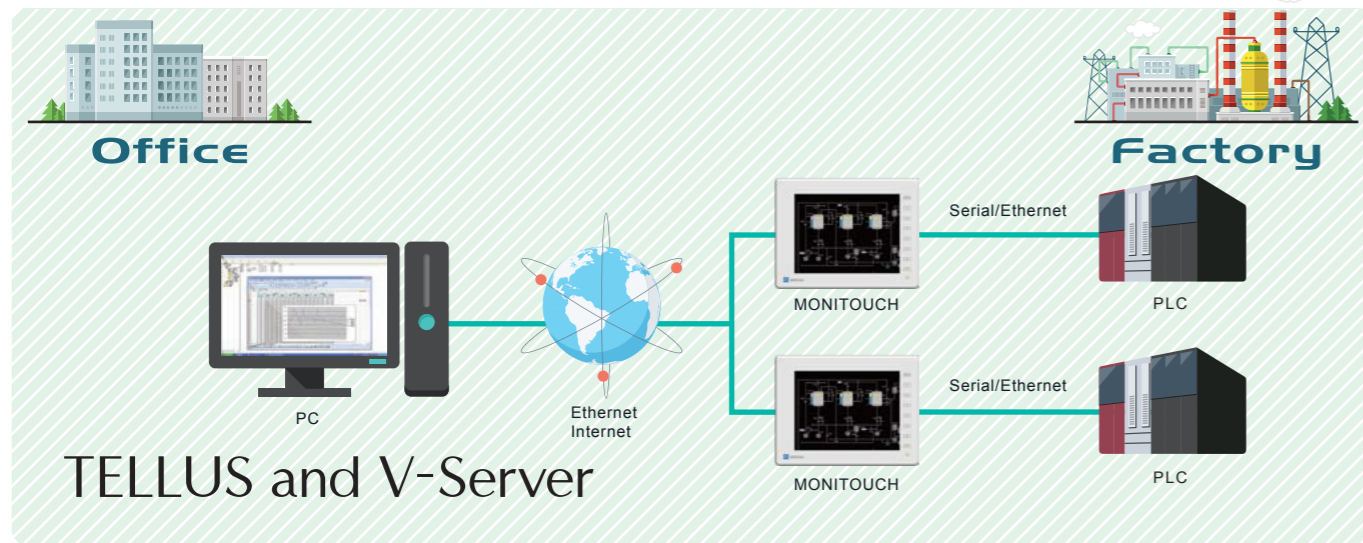
Automatic actions in response to events

Various kinds of events can be set depending on the requirements of the operation. Events allow for a high degree of flexibility, so you can adapt to the specifications of the production line.

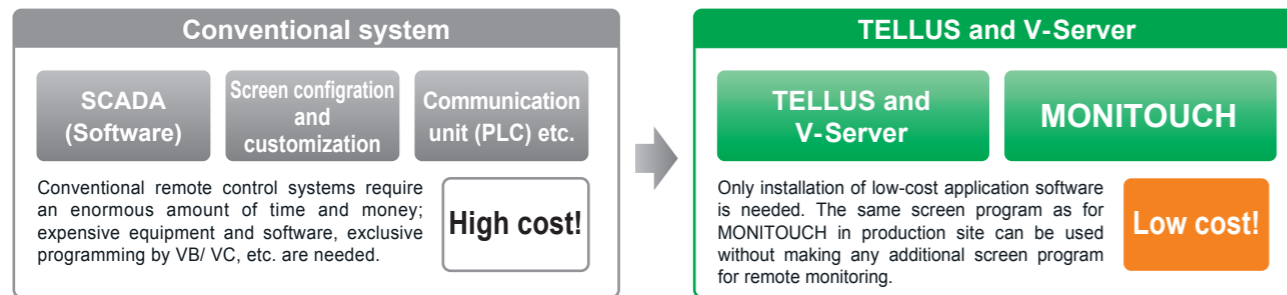
Event (Trigger conditions)		
Bit ON/OFF	Value comparison	Time setting

Action (Operations)		
Start/Stop of logging	Recipe read/write	Sampling readout
Application start-up	Stored data read/write	

Remote monitoring and control TELLUS-Remote

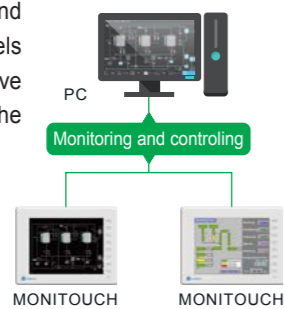


Remote control with excellent cost performance



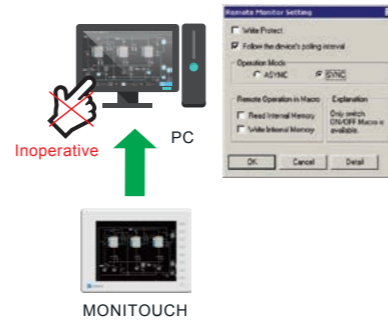
Monitoring and control of multiple units by one PC

TELLUS allows you to control and monitor multiple MONITOUCH panels with a single PC, which helps improve the operating efficiency and the cost-effectiveness.



Security functions against operation errors

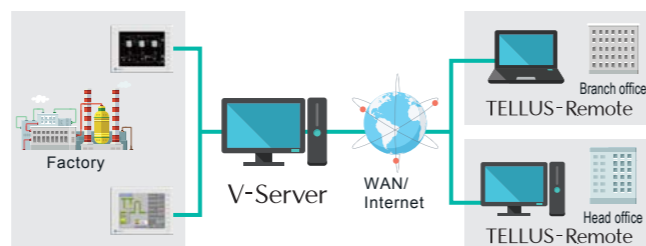
Security functions such as write-protect are provided to ensure safe and secure system operation.



Remote control by means of a simple system

The system is compatible with various systems such as in-house LAN, Internet, WAN, etc.

- You can access the on-site screen via the Internet from a remote location.
- You can monitor overseas plants via WAN.



*It is necessary to modify the setting of firewall and routing for Internet access.

Realizing even higher performance with MONITOUCH by integrating PC/iPad into systems TELLUS-HMI



Install anywhere, even on your palm

TELLUS-HMI iPad

It enables new applications like controlling multiple machines with a single tablet or wirelessly operating a machine while visually monitoring where best.

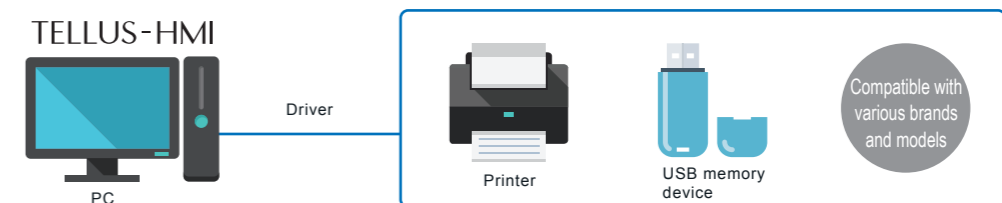


*TELLUS-HMI iPad supports only Ethernet TCT/IP communications.

Easy selection of peripheral equipment

TELLUS-HMI

It is possible to connect peripheral equipment such as printers and mass storage media that have Windows drivers so that the data can be easily output or saved.



Large expandability combined with various applications

TELLUS-HMI

Processing of production data such as summary and analysis can be easily conducted using external software.

<p>TELLUS-HMI PC</p> <p>Shutdown of OS</p> <p>OS can be shut down on TELLUS without displaying the shutdown menu.</p>	<p>Start-up of application</p> <p>Various applications can be run, including that for viewing a PDF of the troubleshooting manual.</p>	<p>Loading and execution of DLL functions</p> <p>DLL functions that were made individually can be loaded and executed on TELLUS.</p>
--	---	---

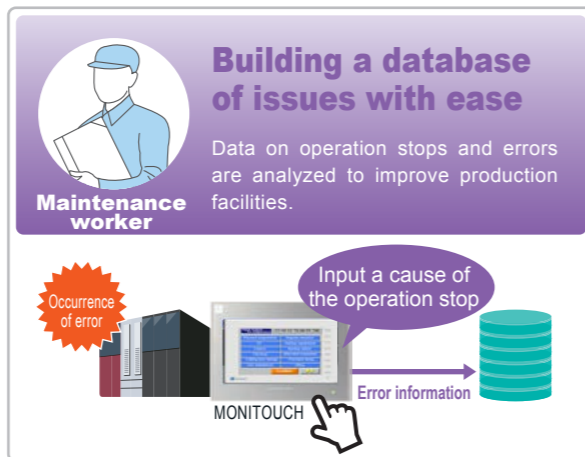
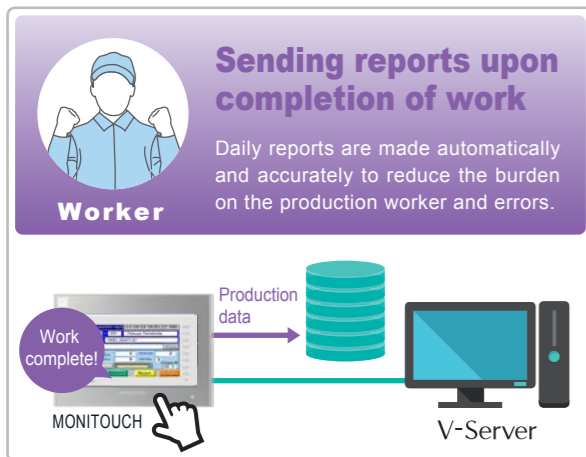
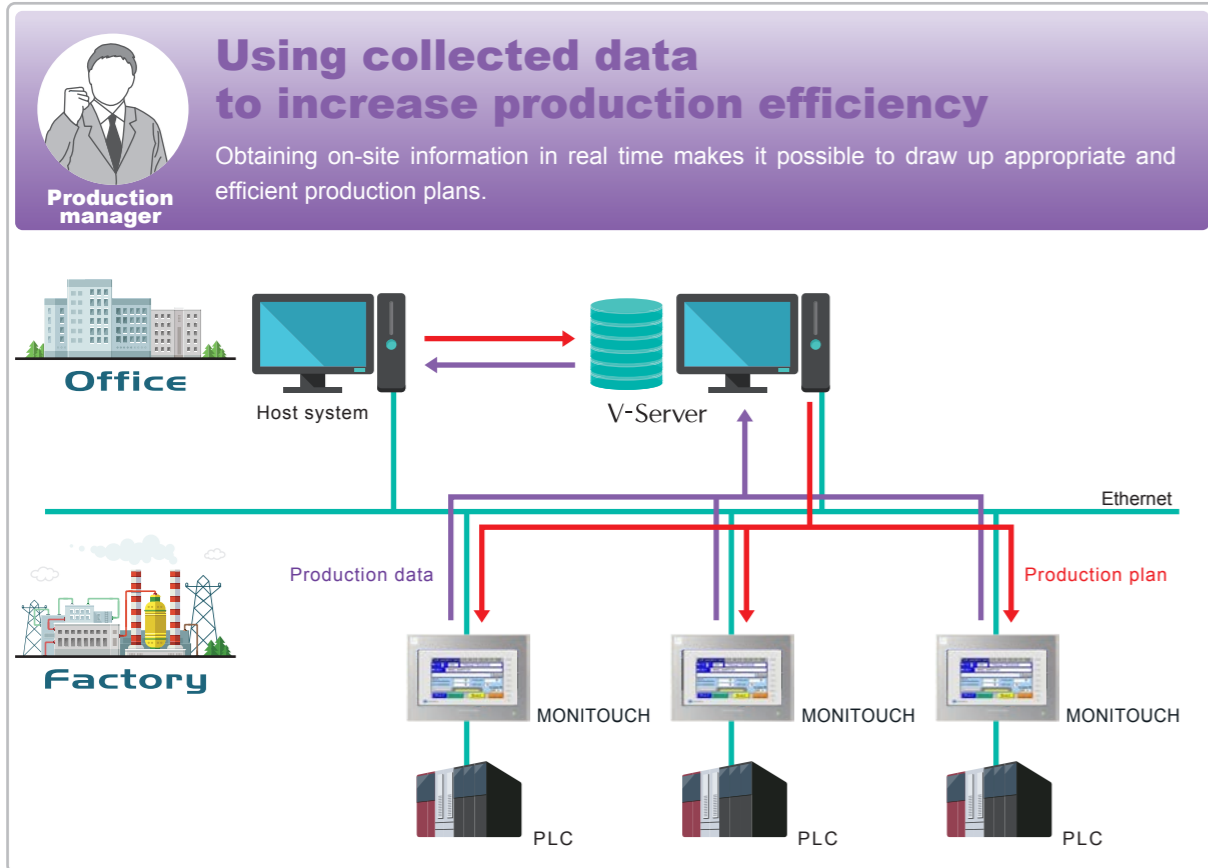
Advantages of using V-Server

“I don't have to bother collecting data any more.”



Real-time collection of on-site production data

Production data can be collected in real time without distracting workers. Collected data can be used for reviewing production plans and improving production facilities.



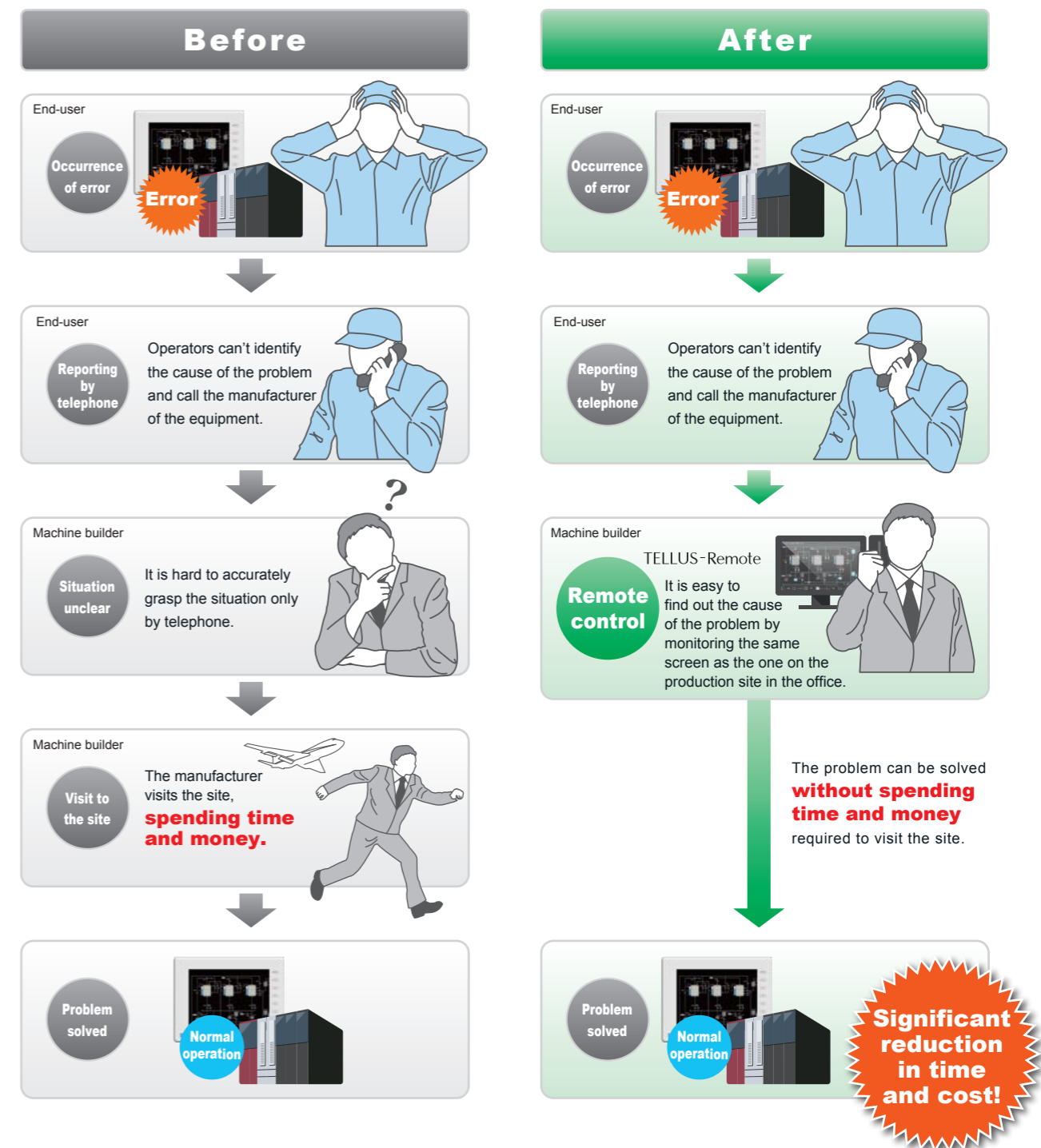
Advantages of using TELLUS-Remote

“We can shorten the downtime.”



Troubleshooting in the office for quick recovery

Prompt response to problems is possible by controlling the production equipment remotely. Production efficiency is improved by shortening downtime, and there is no need to spend the time and money required to send a person to the production site.



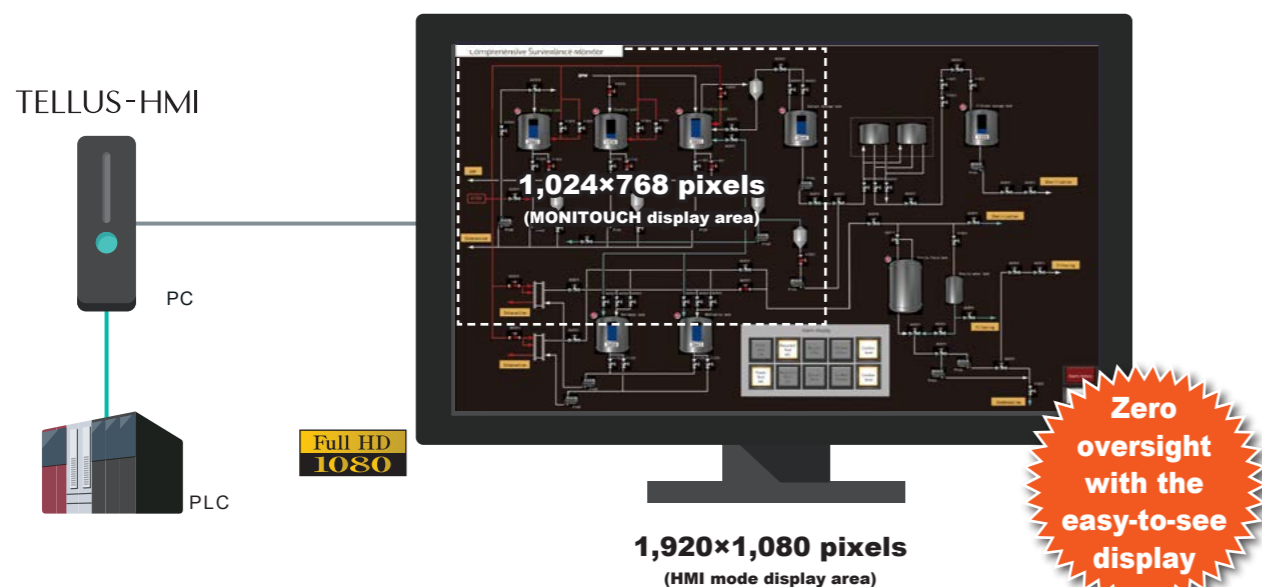
Advantages of using TELLUS-HMI

“I won't miss a problem in production.”



An image of the entire production line can be displayed on one large screen.

Equipping a PC with MONITOUCH functions makes it possible to have a large, full HD*1 display. All operation processes can be displayed on one large screen.

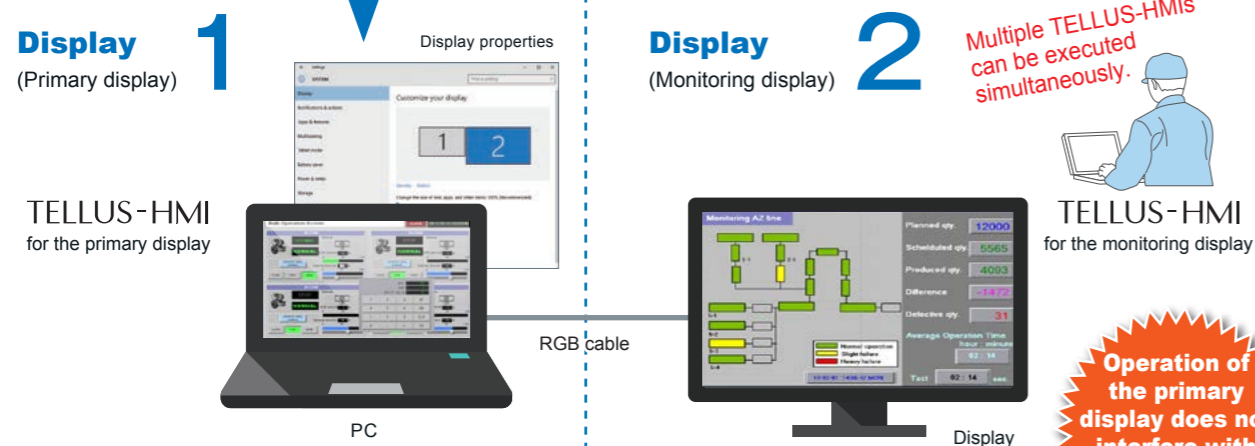


*1 TELLUS Ver.5 supports 4K (3840 x 2160) displays.

Additional display only for monitoring is also available.

The dedicated TELLUS screen only for monitoring can be displayed on a large display.

Run two TELLUS-HMIs and indicate the data on separate displays.



Operation of the primary display does not interfere with the monitoring display.

Applicable Models & Operating Environment

● Applicable Models

X1 series *1
V10 series *1
V9 series
TS2000 series *2
TS1000 Smart series *2

*1 Supported by TELLUS Ver. 5 released on November 1, 2024.
*2 TELLUS-Remote and V-Server can only be connected to Ethernet compatible models.

● System Requirements (PC)

Please ensure the following conditions are in place for the operation of TELLUS and V-Server

PC	PC running Windows
OS	TELLUS5: Windows 11 (64bit)/10 (64bit) Windows Server 2022/2019/2016 TELLUS4: Windows 11 (64bit)/10 (64bit/32bit)/8.1 (64bit/32bit) V-Server: 8 (64bit/32bit)/7 (64bit/32bit)/Vista (64bit/32bit) Windows Server 2022/2019/2016/2012/2008 R2
CPU	Windows 11: 2 cores or higher (64 bit) or System on a Chip (SoC) Windows 10 or earlier : Intel Core 2 Duo 2GHz or higher recommended
Memory	8GB or more recommended (16GB or more recommended when using functions such as alarm, logging, sound, event timer macros, cycle macros, etc.)
Hard disk	When installed: 2.5GB or more In operation: 2.0GB or more free virtual memory space
Display	1024 x 768 (XGA) or greater

TELLUS Ver.5, Ver.4, Ver.3 and Ver.2 are installed when TELLUS-HMI is installed.

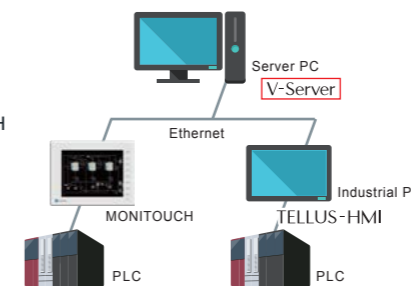
License Types

One license is required for each device. There are five types of licenses for different uses. (License framed in red is equivalent to one license.)

1 V-Server

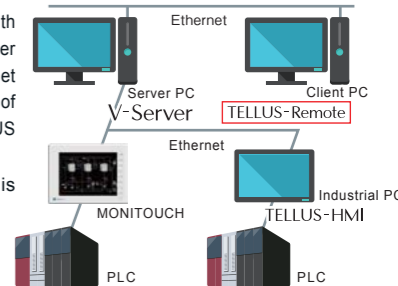
The functions of V-Server are carried out by the server PC.

- Readout/ writing of the recipe data for MONITOUCH (or TELLUS HMI)
- Alarm monitoring
- Event action
- Screen data transfer (excluding TELLUS-HMI)



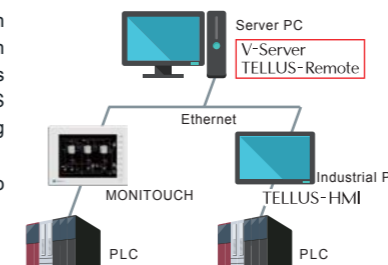
2 TELLUS-Remote

- A client PC equipped with TELLUS accesses V-Server on a server PC via Ethernet and operates the screens of MONITOUCH (or TELLUS HMI) remotely.
- HMI communication is also possible.



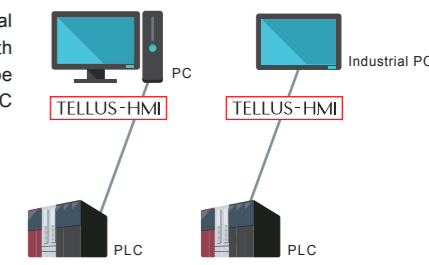
3 TELLUS and V-Server

- A server PC equipped with TELLUS and V-Server can remotely control the screens of MONITOUCH (or TELLUS HMI) while conducting V-Server functions.
- HMI communication is also possible.



4 TELLUS-HMI

- A PC (or Industrial PC) equipped with TELLUS-HMI can be connected with a PLC like MONITOUCH.



5 TELLUS-HMI iPad

- iPad performs communications equivalent to the V series*2 by connecting to a PLC wirelessly.

*2 Only models capable of Ethernet (TCP/IP) communication can connect.



License Validation

There are two types of licenses: Password validation and USB license key.

USB license key

- TELLUS-HMI USB Key
- TELLUS-Remote USB Key
- TELLUS and V-Server USB Key



Password validation

- TELLUS-HMI/ TELLUS-HMI iPad
- TELLUS-Remote
- TELLUS and V-Server
- V-Server

License Validation

License validation is restricted to one license per device. There are five types of licenses, one for each function (See above diagram). Check the type of license for the function(s) you wish to use it for.

Note*: When reinstalling the application software on the same computer, the same password is valid. However, if you initialize the OS or change the device to use the application software, the password becomes invalid. In this case, you must go through the license validation procedure again to get a new password.

*Excluding USB license keys. To reissue your password, the old "PCID" that was informed at the time of previous order is required. Please keep it in a safe place.