

Special number issued
in commemoration of V9 releasing

NEW

Issue No. 46
May, 2014

MONITOUCH V9 series is finally ready to release to the market on May 2014!!
Since this is published as a special number issue in commemoration of V9 releasing,
this issue of the MONITOUCH+EXPRESS features V9 line up and the introduction of more
improved configuration software V-SFT-6.
Long-Awaited V9 is now available!!

V9 series Line up

V9 Advanced



Model	Display size	Resolution		Releasing
V9101iWRLD	10.1"	WSVGA	1024×600	Autumn, 2014
V9101iWLD	10.1"	WSVGA	1024×600	Autumn, 2014
V9071iWRD	7"	WVGA	800×480	Autumn, 2014
V9071iWLD	7"	WVGA	800×480	Autumn, 2014

V9 Standard



Model	Display size	Resolution		Releasing
V9150iX/V9150iXD	15"	XGA	1024×768	Autumn, 2014
V9120iS/V9120iSD	12.1"	SVGA	800×600	Autumn, 2014
V9100iS/V9100iSD	10.4"	SVGA	800×600	May, 2014
V9080iSD	8.4"	SVGA	800×600	May, 2014

V9 Lite



Model	Display size	Resolution		Releasing
V9100iC/V9100iCD	10.4"	VGA	640×480	May, 2014
V9080iCD	8.4"	VGA	640×480	May, 2014
V9060iT	5.7"	VGA	640×480	Autumn, 2014

V-SFT-6 (Configuration software)

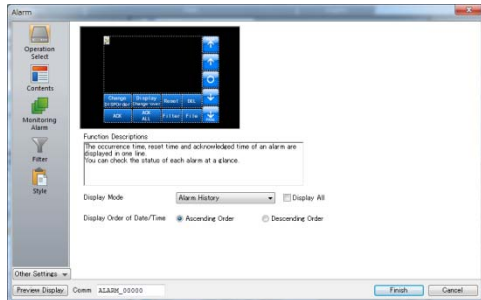
User friendly programming tool.
 Our target is to create well-designed screen with easier configuration.
 Intuitive configuration can be achieved on the new software V-SFT-6.



V-SFT ver.6

Integrated setting window

The settings are displayed on the window in order from the top to the bottom. It prevents the oversight of the setting. It is also possible to add the related parts from the same dialog so that you can set and edit the setting easily.



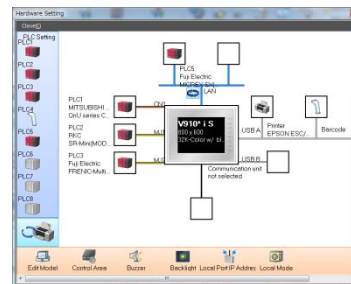
Extended parts

The new parts "Plain parts" is added to the library as well as expanded real parts and sign parts. More sophisticated screen can be easily configured with the standard library.



System configuration

The connected devices (PLC and temp. controller) are displayed with the icon on the software so that it is easier to find the communication structure at once. Adding the device and editing the parameter are also easily done by double-clicking the image of the device. (Unit setting and system setting are also available from this menu.)



7-segment display

The 7-segment font is added to Numerical display function. This request was adopted due to the high visibility. It is very easy to set by setting the char. property to 7-segment font.



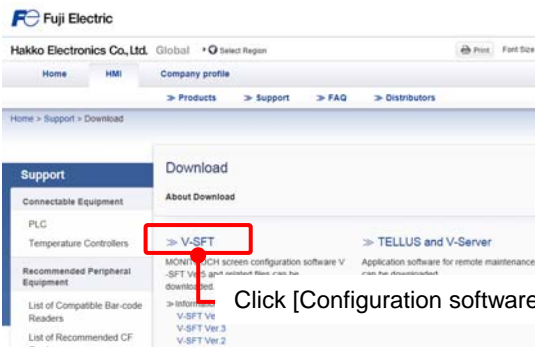
How to install V-SFT-6?

Install method

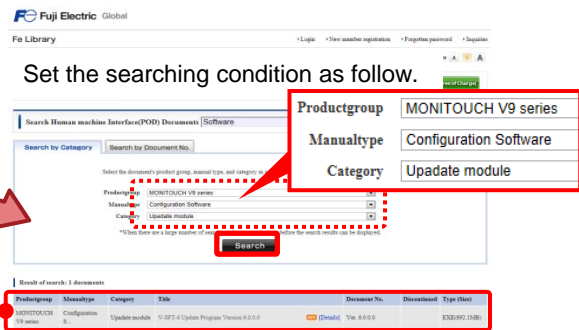
If our current V-SFT is already installed on your PC, visit our website to download the upgrade file and install it on your PC.

- * The new software V-SFT-6 is installed separately so that the original version of V-SFT is kept installed on your PC.
- * Windows XP or later OS (Windows XP/Vista/Win 7/Win 8) supported.

<http://monitouch.fujielectric.com/site/support-e/download-index-01.html>



Click [Configuration software (V-SFT)]



Execute downloading by clicking [Configuration software (V-SFT)]

To purchase V-SFT-6, please specify the part number [V-SFT-6].

- * V-SFT Ver. 6 is the CD-ROM for installing.
- Users manuals in hardcopy are not included.

Fe membership (Fe Library) registration

It is required to register to Fe membership (Fe Library) in order to upgrade V-SFT. Please go to the following URL for registration if it has not been done yet.

<https://felib.fujielectric.co.jp/download/entryrules.htm?signupid=1DD9540266083B75&site=global&lang=en>

Please check the following points when register.

- Major Types of Equipment Used: check Human Machine Interface (POD)
- Would you like to be sent news via email?: Yes
 >>The latest information is announced by e-mail.

