

V9 series Display features

NEW

Display features are remarkably improved with V9 series:

- Splash screen : Startup screen can be customized.
- Status bar : Current status is displayed on the status bar.
- Comm error display : Error display becomes more straightforward.
- System keyboard : Built-in keyboard with alphanumeric and signs is available.

Splash screen

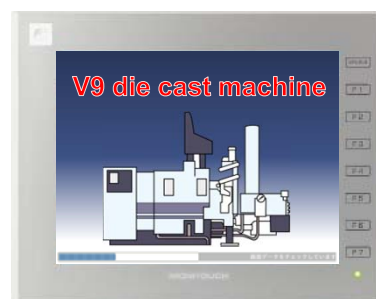
Use your favorite PNG file for startup screen

You can easily customize startup screen by simply specifying image data (in PNG) as a splash screen.

*Available format is PNG file and pattern data registered in V-SFT-6.



<Default splash screen>



<Customized splash screen>

Tool to give your machine high-end look with originality

It is possible to show a product logo or a company logo on the screen.

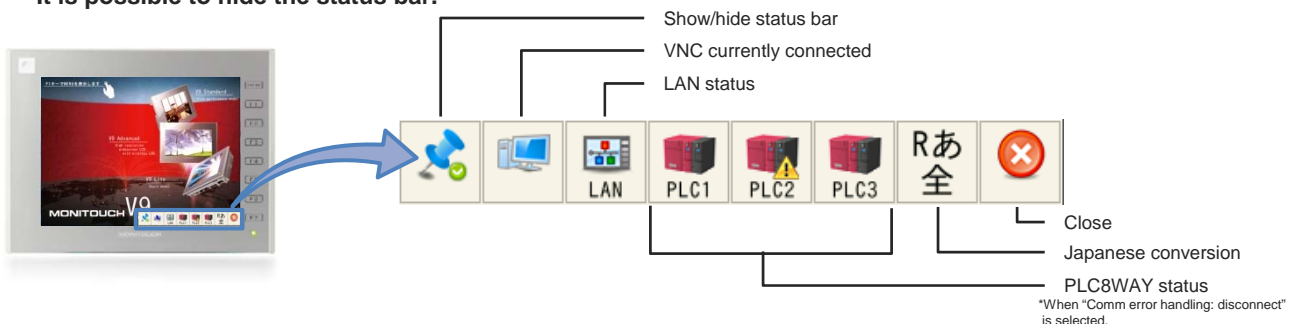
By customizing the startup screen to match up with the system, you can have an upscale image and originality.

Status bar

Current communication status and LAN status etc. are displayed on the status bar.

It is possible to grasp the communication status while the HMI is in RUN mode, which contributes to quicker restoration.

*It is possible to hide the status bar.

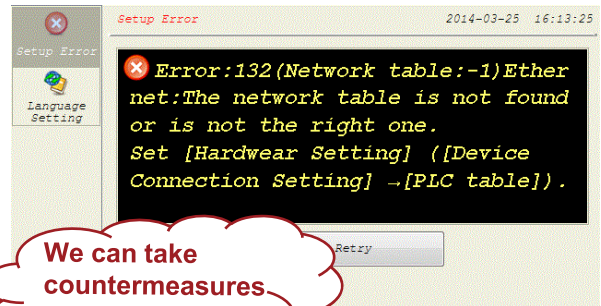


Improved communication error display

Improved error messages

When communication error or screen data error occurs, V9 shows **the description of the error** on the screen.

Not only error codes and error messages are displayed, but also its countermeasures are displayed. Hence **immediate action can be taken**.



We can take countermeasures without manuals!

Communication error item

Item showing the value of the device under comm error, **! icon is displayed** on it.
 *When "Comm error handling : disconnect" is selected.

Communication status is intuitively identified so that you can take quick action.

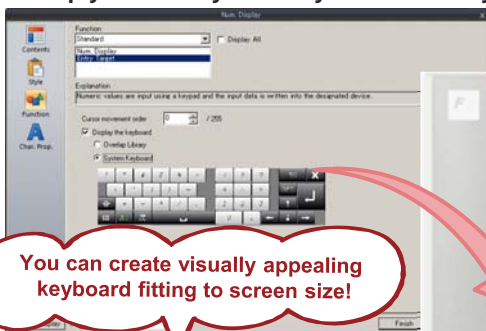
While particular device is down, **V9 keeps running**. Hence, there will be no affect on machine operation from HMI side.

PLC1	362	
PLC2	355	! Error
PLC1	619	

System keyboard

Our system keyboard with alphabets in both upper/lower cases, signs, and numerals is available as a standard feature. You do not need to create pop-up windows from scratch.

Simply select "System keyboard" when you set a numeral or character display.



You can create visually appealing keyboard fitting to screen size!



- ★ Easy
- ★ Convenient
- ★ Beautiful