

## V9 Advanced Capacitive touch switch

**NEW**

Issue No. 60  
November 2014

V9 Advanced adopts capacitive touch switch which gives you intuitive, smartphone-like operations such as pinching-in/out or scrolling. Information you want to see is displayed in easily viewable way.

### Smooth operation with your fingers

#### Pinch-in & out to zoom-in/out

The displayed image can be magnified up to 200% by pinching out the screen, and reduced to the original size by pinching it in.



Pinching-in

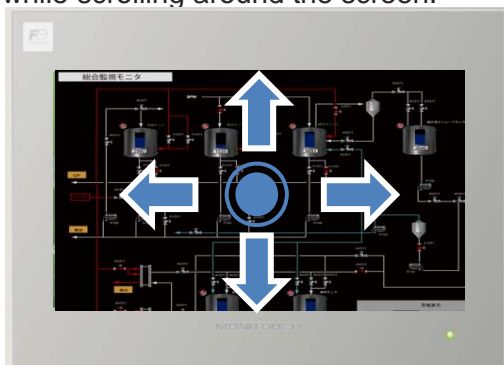


Pinching-out

\* The image can be scaled up and down by double-tapping for V9 Standard & V9 Lite.

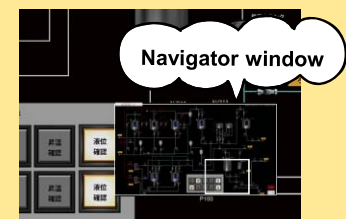
#### Scrolling magnified images

You can view a particular part of a magnified image in close-up while scrolling around the screen.



#### Navigator window

The navigator windows gives you current location in the magnified screen.



\*Both scroll operation and navigator window are supported with all V9 models.

Displaying 4 times the screen size

First in industry

Grasp entire image by scrolling the screen without splitting it

Twice in width

Twice in height

Screen size

Information up to 4 times

4 times in width

4 times in height

Navigator window tells you where you are.

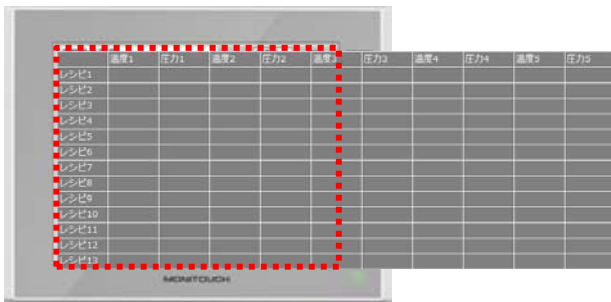
Images can be laid out 4 times the screen size in height or width according to your needs.

\*Available with all V9 models.

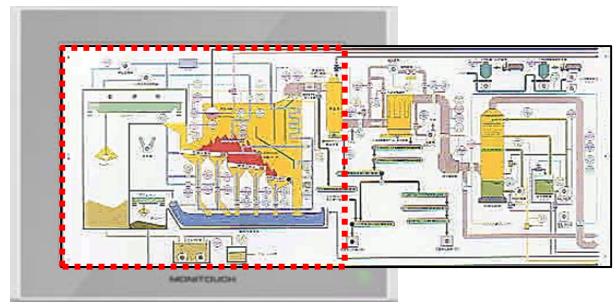
Useful examples!

**Examples**

For recipe or parameter edit:  
 You can refer to the values around the data you are currently editing.



For a substitute for conventional graphic panel:  
 You can display entire schematic without splitting it into several screens.



**Hakko Electronics Co., Ltd.**

Overseas Sales Department  
 TEL: +81-76-274-2144 FAX: +81-76-274-5136  
<http://monitouch.fujielectric.com/>