

Tips on Macro Command - Part 2 -

In this MONITOUCH + EXPRESS, we will introduce the second tip on the macro command "Auto deletion of overlap" as announced on MONITOUCH + EXPRESS No. 38.

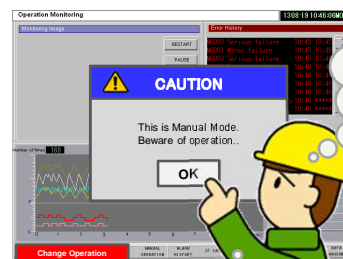
Let's use the macro commands more efficiently!!

Auto deletion of overlap

Do you use any overlap to call an operator attention when using buttons?

In such case, it is common to press the [OK] button to delete the overlap.

Don't you think that it will be smoother if the overlap disappears without pressing the [OK] button?



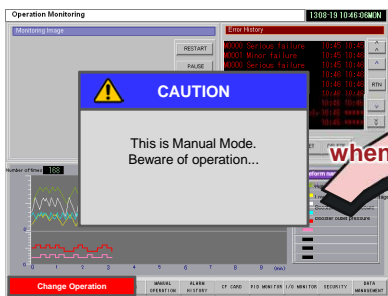
It is troublesome to do this action every time it is displayed.

I wish I could operate the next process right away.

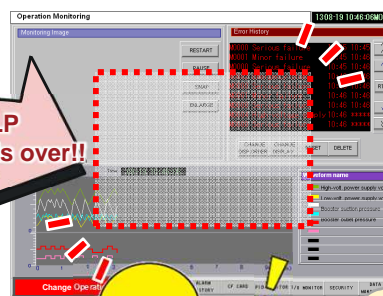
Useful Tips!!

Operation Process

Overlap is deleted automatically when the setup time is over by adding some macro commands. The time of deletion can be set by the users. (0 – 25.5 sec)



Auto delete OVL P when the setup time is over!!



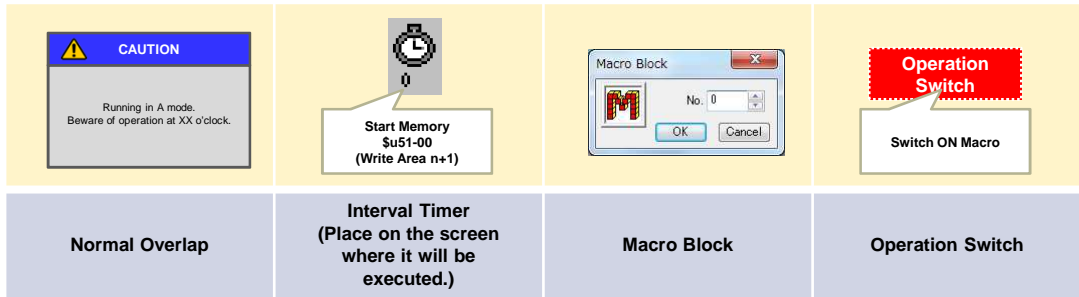
It is a great change by adding such a small arrangement!!

Very user-friendly by skipping the only one operation.

Next

By getting a little creative with macro commands, you can customize your own screen program!!

Screen Structure



Macro Setting

1. Macro Block (Registration Item >> Macro Block)

[No.0]
 \$u00150 = 0 (W) ———— Overlap ID No.
 \$u00151 = 0 (W) ———— Action (0: OFF, 1: ON)
 SYS (OVL_P_SHOW) \$u00150

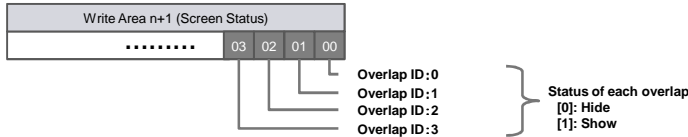
} Hide the overlap ID No.0

2. Interval Timer (Parts >> Macro >> Interval Timer)

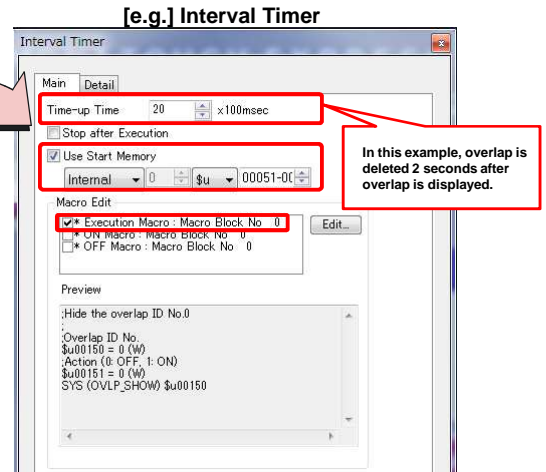
[Time-up Time]
 Set the elapsed time before the overlap is deleted automatically. (0-25.5 sec)

[Use Start Memory]
 Set up the bit memory address of Write Area n+1 which is output the overlap displaying status.

The timer is started when the overlap is displayed.
 *In this example, it is set to \$u51-00 because Write Area sets to \$u50 and overlap ID is No.0.



[Execution Macro]
 Set a Macro Block number which is registered at above setting (1).



3. ON Macro of operation Switch

It uses the branch condition by operational status and when it satisfies the condition, overlap is displayed.

Judge the operational status by \$u500.
 When the condition is satisfied ("1" in this example.), the following macro commands are executed.

IF(\$u00500 == 1) (W) ————
 \$u00100 = 0 (W) ———— Overlap ID No.
 \$u00101 = 1 (W) ———— Action (0: OFF, 1: ON)
 SYS (OVL_P_SHOW) \$u00100
 ELSE
 ENDIF

} Show the overlap ID No. 0.

*Download the sample screen program from here>>

http://www.hakko-elec.co.jp/mainte/data/en/download/E_Download/Sample_Screen.zip

Please refer to the "Macro Reference" for more detail regarding Macro Command.

*It is possible to refer the manual from help menu on V-SFT-5.