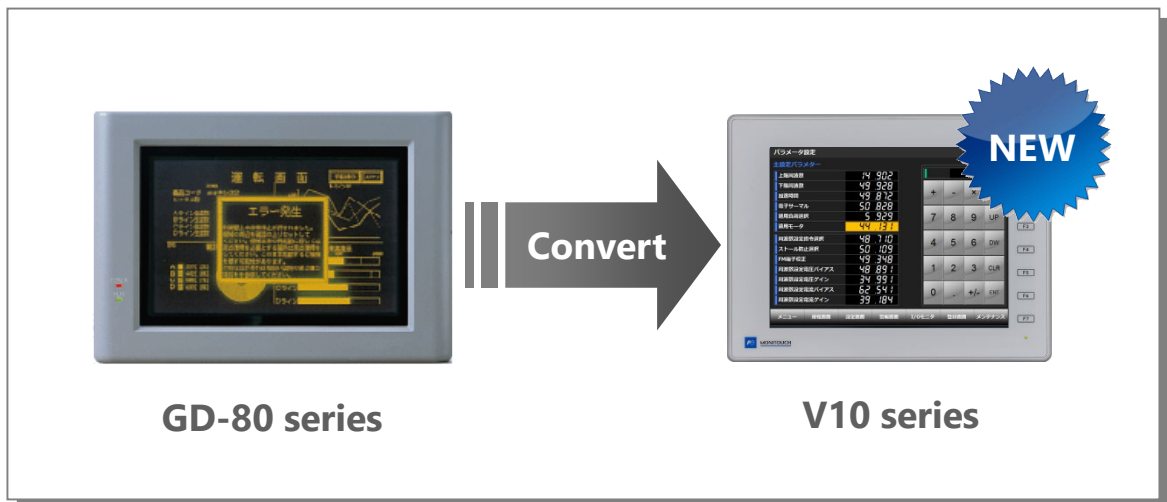


MONITOUCH

V10 Replacement Guidance [GD-80 series]



[- List of Recommended Replacement Models](#) [Page 2](#)

[- Configuration Software](#) [Page 4](#)

[- Screen Program Conversion](#) [Page 5](#)

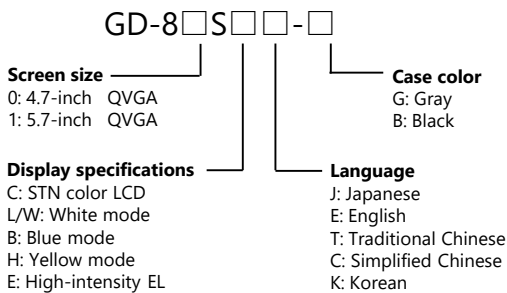
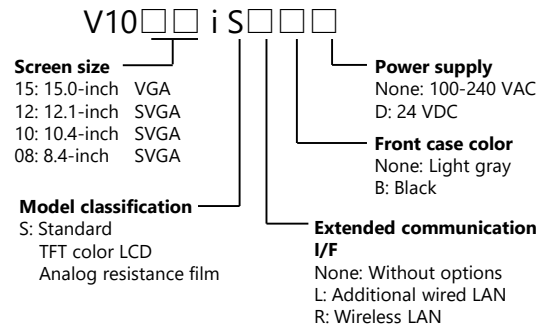
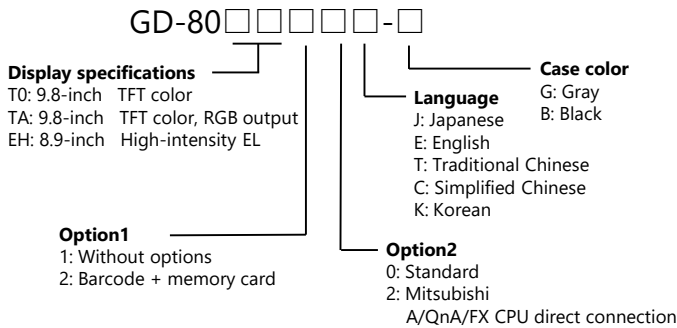
List of Recommended Replacement Models

Following is a list of V10 replacement models for GD-80 series. Please check the model of GD-80 unit in use and select the recommended replacement model.

Size	GD-80 model		V10 model		Refer to
	Gray	Black	Light Gray	Black	
9.8-inch DCGA	GD-80T0xxx-G	GD-80T0xxx-B	The screen resolution differs from V10. Use V9 Lite that supports the "GD-80 compatible setting".		Page 3
	GD-80TAxxx-G	GD-80TAxxx-B			
8.9-inch DCGA	GD-80Exxxx-G	GD-80Exxxx-B			
5.7-inch QVGA	GD-81SCx-G	GD-81SCx-B	There are no 5.7-inch models in the V10 series. Use TS2060i which has the same size and resolution.		-
	GD-81SWx-G	GD-81SWx-B			
	GD-81SBx-G	GD-81SBx-B			
	GD-81SHx-G	GD-81SHx-B			
4.7-inch QVGA	GD-80SEx-G	GD-80SEx-B	There are no 4.7-inch models in the V10 series. Use TS2060i, which is 5.7 inches and has the same resolution.		-
	GD-80SLx-G	GD-80SLx-B			

* Models with few restrictions on use are described above list of recommended replacement models. It is also possible to replace GD-80 with V10 other than the recommended model. Select the model according to your system.

Model Description



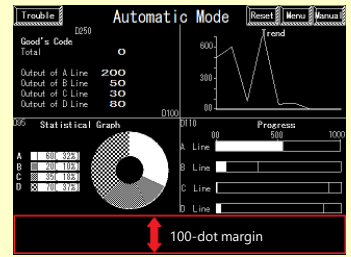
- GD-80T/GD-80E → V10 Standard

The screen resolution differs between GD-80 and V10 Standard.
 GD-80: 640 x 400 → V10: 800 x 600 dots

When replacing with a similar resolution unit, use V9 Lite that supports "GD-80 compatibility setting".

When converting the screen program from GD-80 to V10, a 100-dot margin is created on the bottom. Adjust this margin manually. If the layout is changed, adjust also it manually.

Panel cut-out dimensions vary. Use the optional mounting panel adaptor.



Recommended Replacement Models

Size	GD-80 model	
	Gray	Black
9.8-inch DCGA	GD-80T0xxx-G	GD-80T0xxx-B
	GD-80TAxxx-G	GD-80TAxxx-B
8.9-inch DCGA	GD-80Exxxx-G	GD-80Exxxx-B



GD-80T



GD-80E

V10 model	
Light Gray	Black
V1010iS	V1010iSB
V1008iS	V1008iSB



V1010iS



V1008iS

Hardware Specifications

Item		GD-80
Dimensions W x H x D (mm)	9.8-inch	328.0 x 240.0 x 105.0
	8.9-inch	288.0 x 203.0 x 95.0
Panel cut-out W x H (mm)	9.8-inch	317.0(+1.0/-0) x 229.0(+1.0/-0)
	8.9-inch	277.0(+1.0/-0) x 192.0(+1.0/-0)
Display device		TFT color/High-intensity EL
Display colors		16 colors/ 8 colors/ 2 colors
Resolution		640 x 400 dots
Touch switch		Matrix resistance film
Communi- cation I/F	Serial	D-Sub 25-pin x1 : RS-232C / RS-422/485 D-Sub15pin x1 : RS-422 *6 Terminal block : RS-422/485
	Barcode	D-sub 9-pin x1 : RS-232C *8
External storage device		Dedicated memory card *8
RGB output		1 CH
Power supply	9.8-inch	85 to 265 VAC
	8.9-inch	85 to 265 VAC

V10 Standard	
303.8 x 231.0 x 53.8	
235.0 x 180.0 x 48.7	
289.0(+0.5/-0) x 216.2(+0.5/-0) *1	
220.5(+0.5/-0) x 165.5(+0.5/-0) *2	
TFT color	
16.7 million colors *3	
800 x 600 dots *4	
Analog resistance film *5	
D-Sub 9-pin x1 : RS-232C / RS-422/485 *7 Modular 8-pin x2 : RS-232C / RS-485	
Modular 8-pin x2 : RS-232C *9	
SD/SDHC/SDXC card USB flash drive	
Under development Scheduled to be released in spring 2025.	
100 to 240 VAC	
24 VAC	

*1 V10 can be mounted using the mounting adapter "PAD-V610". Refer to Page 4.

*2 V10 can be mounted using the mounting adapter "PAD-V608-01". Refer to Page 4.

*3 Only for displaying "picture" images, 3D parts, video / RGB input images and remote desktop window. All other content is displayed using 65,536 colors.

*4 The resolution is SVGA (100-dot margin at the bottom). When converting the screen program, use automatic resizing feature of V-SFT. If the layout is changed, adjust it manually.

*5 It is not possible to press two points on the screen at the same time on V10. For two-point press, change the setting to use both a switch on the screen and a function switch.

*6 Only for GD-80xxxMx-x

*7 When using the existing cable, use Hako Electronics' conversion cable "D9-D25". When the terminal block was used, use Hako Electronics' optional unit "TC-D9".

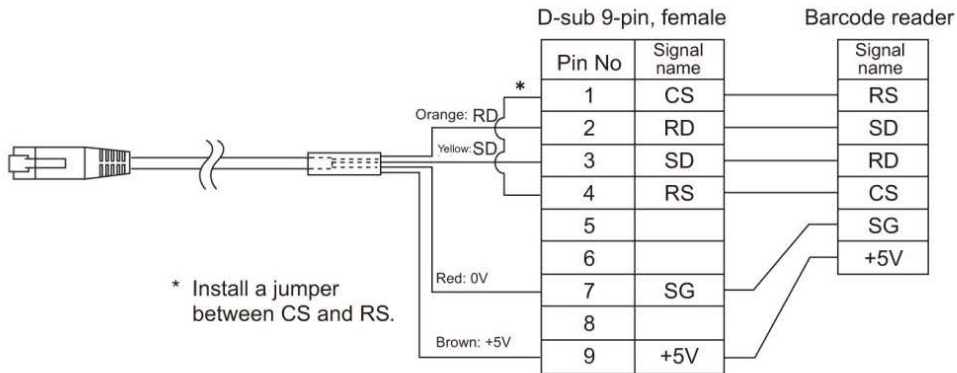
When directly connecting with a Mitsubishi A/QnA/FX CPU, use "D9-MB-CPUQ". When using the existing cable, use Hako Electronics' conversion cable "D9-D15".

*8 Only for GD-80xx2x-x

*9 Use Hako Electronics' cable "V6-BCD" and make a conversion cable between MJ → D-sub 9-pin. For the wiring diagram, refer to page 4.

- For barcode reader: MJ ↔ D-sub 9-pin conversion cable wiring diagram

When replacing GD-80 with V10, use Hakko Electronics' cable "V6-BCD" and make a conversion cable between MJ ↔ D-sub 9-pin.



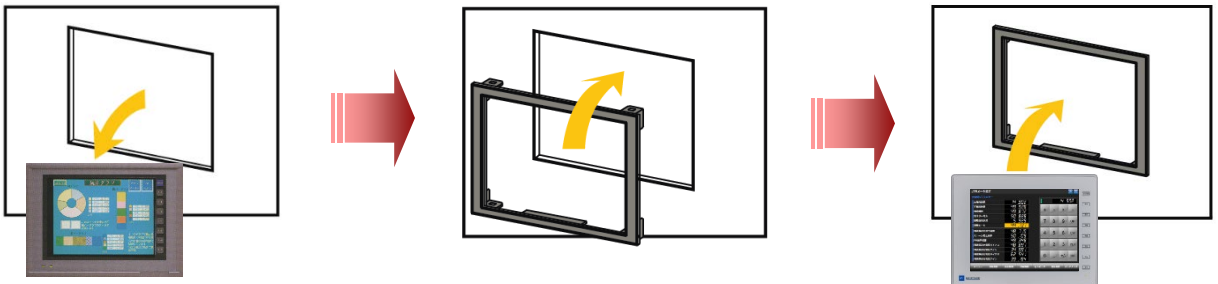
- Mounting panel adaptor (PAD-V6xx-xx)

It is used to install V10 into the GD-80 panel cut-out hole.

1. Remove the GD-80 unit from the panel.

2. Install the mounting panel adaptor.

3. Install a V10 series unit.



- Configuration Software

Model	Software	OS	Transferring cable *1
GD-80	GD-SFT80W	Windows Ver.3.1 Windows 95 Windows 98 Windows NT	- GD-CPV cable *2 - V-CP cable (MJ to Dsub9) + ADP25-M adaptor manufactured by Hakko Electronics Co., Ltd.
V10	V-SFT-6 Supported with version 6.2.0.0 or later	Windows Vista (32bit, 64bit) Windows 7 (32bit, 64bit) Windows 8 (32bit, 64bit) Windows 8.1 (32bit, 64bit) Windows 10 (32bit, 64bit) Windows 11(64bit)	- USB cable (USB mini-B to USB-A) - LAN cable *3 - V-CP (MJ to Dsub9) manufactured by Hakko Electronics Co., Ltd.

*1 The screen program can be transferred via SD card/USB flash drive when using V10 and dedicated memory card when using GD-80xx2.

*2 GD-CVP cable can be made by the user. For wiring details, refer to the Hardware Specifications Manual for the GD-80 series.

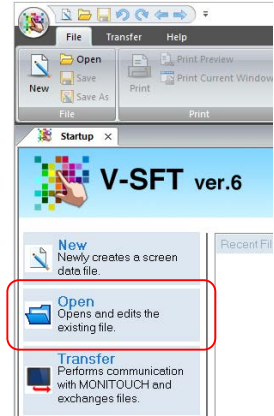
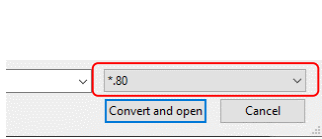
*3 LAN connector of V10 supports Auto-MDIX. Straight/crossover cables can be used with or without HUB.

- Screen Program Conversion

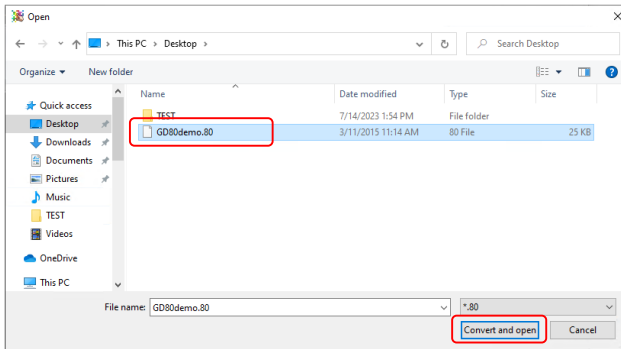
The screen program can be converted from GD-80 to V10 using V-SFT-6 (configuration software for V series).

- Conversion procedures

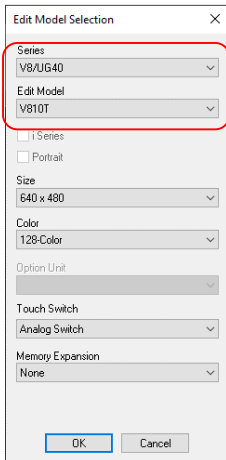
1. Start V-SFT and click [Open] in the Startup menu or [Open] in the [File] menu. The screen program file can also be opened by dragging it onto V-SFT-6. If using this method, proceed to step 4.
2. Change the file extension to [*.80] in the [Open] dialog.



3. Select the GD-80 series screen program file and click [Convert and open].



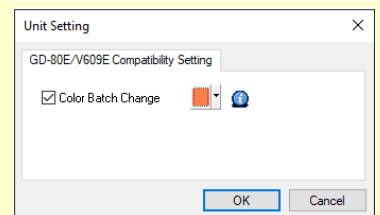
4. The [Edit Model Selection] dialog appears. Select the V8 series model "V810T" and click [OK].



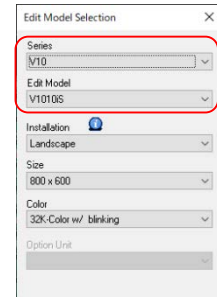
* If you skip step 4 and proceed to step 5, the automatic resizing feature is not available. Adjust the overall layout manually, or go back to step 1 and convert again.

When converting the GD-80E screen program, the dialog on right appears. The screen can be converted to 2-color screen by checking [Color Batch Change] and selecting a color.

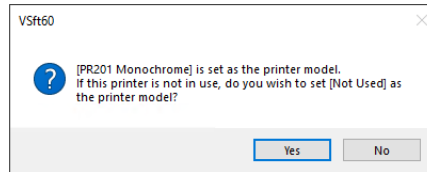
The color can be changed in [System Setting] → [Unit Setting] → [GD-80E/V609E Compatibility Setting].



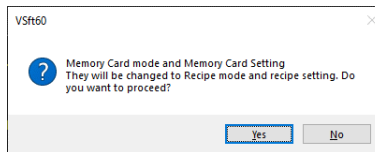
- Select the V10 series model in [System Setting] → [Edit Model Selection] and click [OK].



- The dialog on the right may be displayed. When connecting to a printer : Click [Yes]
When not connecting to a printer : Click [No]

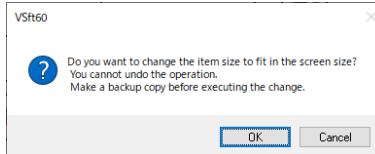


- The dialog on the right may be displayed. Click [Yes].



- The data conversion in the storage device is required. Refer to the Memory Card Mode Conversion Manual.

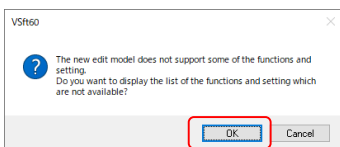
- When converting the program with different resolution, the dialog shown to the right will appear. When enlarging parts: Click [Yes]
When not enlarging parts: Click [No]



- If the layout is changed, adjust it manually.

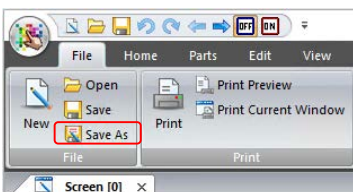
- The following dialog may be displayed. Click [Yes] to display the error check window and check the functions and setting which are not available. Check [solution] and modify it.

If the same warning message appears even in the GD-80 screen program before conversion, the warning does not affect the program and you can use it without modification.



Error Check			
0 Error 2 Warning			
Category	Location	Explanation	Solution
Warning	Overlap Library[?] Normal Overlap	Overlap larger than the screen is created.	Set the overlap
Warning	Overlap Library[8] Normal Overlap	Overlap larger than the screen is created.	Set the overlap

- The screen program converted to V10 series is displayed on V-SFT. Name and save the file.



The converted V10 screen program cannot be converted back to the GD-80 screen program. Confirm the operation with the V10 series unit before use.